

Swarthmore College

Works

Physics & Astronomy Faculty Works

Physics & Astronomy

8-1-2021

Discovery Of A Young Low-Mass Brown Dwarf Transiting A Fast-Rotating F-Type Star By The Galactic Plane eXoplanet (GPX) Survey

P. Benni

A. Y. Burdanov

V. V. Krushinsky

See next page for additional authors

Follow this and additional works at: <https://works.swarthmore.edu/fac-physics>



Part of the [Astrophysics and Astronomy Commons](#)

Let us know how access to these works benefits you

Recommended Citation

P. Benni et al. (2021). "Discovery Of A Young Low-Mass Brown Dwarf Transiting A Fast-Rotating F-Type Star By The Galactic Plane eXoplanet (GPX) Survey". *Monthly Notices Of The Royal Astronomical Society*. Volume 505, Issue 4. 4956-4967. DOI: 10.1093/mnras/stab1567
<https://works.swarthmore.edu/fac-physics/471>

This work is brought to you for free by Swarthmore College Libraries' Works. It has been accepted for inclusion in Physics & Astronomy Faculty Works by an authorized administrator of Works. For more information, please contact myworks@swarthmore.edu.

Authors

P. Benni, A. Y. Burdanov, V. V. Krushinsky, A. Bonfanti, G. Hébrard, J. M. Almenara, S. Dalal, O. D. S. Demangeon, M. Tsantaki, J. Pepper, K. G. Stassun, A. Vanderburg, A. Belinski, F. Kashaev, K. Barkaoui, T. Kim, W. Kang, K. Antonyuk, V. V. Dyachenko, D. A. Tastegaev, A. Beskakotov, A. A. Mitrofanova, F. J. Pozuelos, E. D. Kuznetsov, A. Popov, F. Kieger, P. A. Wilson, G. Ricker, R. Vanderspek, D. W. Latham, S. Seager, J. M. Jenkins, E. Sokov, I. Sokova, A. Marchini, R. Papini, F. Salvaggio, M. Banfi, Ö. Baştürk, Ş. Torun, S. Yalçinkaya, K. Ivanov, G. Valyavin, E. Jehin, M. Gillon, E. Pakštienė, V.-P. Hentunen, S. Shadick, M. Bretton, A. Wünsche, J. Garlitz, Y. Jongen, D. Molina, E. Girardin, F. Grau Horta, R. Naves, Z. Benkhaldoun, M. D. Joner, M. Spencer, A. Bieryla, D. J. Stevens, Eric L.N. Jensen, K. A. Collins, D. Charbonneau, E. V. Quintana, S. E. Mullally, and C. E. Henze

Discovery of a young low-mass brown dwarf transiting a fast-rotating F-type star by the Galactic Plane eXoplanet (GPX) survey

P. Benni¹★, A. Y. Burdanov^{2,3}★, V. V. Krushinsky⁴, A. Bonfanti^{5,6}, G. Hébrard^{7,8}, J. M. Almenara⁹, S. Dalal⁷, O. D. S. Demangeon¹⁰, M. Tsantaki¹¹, J. Pepper¹², K. G. Stassun¹³, A. Vanderburg¹⁴*, A. Belinski¹⁵, F. Kashaev¹⁶, K. Barkaoui^{17,18}, T. Kim¹⁹, W. Kang¹⁹, K. Antonyuk²⁰, V. V. Dyachenko²¹, D. A. Rastegaev²¹, A. Beskakotov^{21,22}, A. A. Mitrofanova²¹, F. J. Pozuelos^{6,17}, E. D. Kuznetsov²³, A. Popov²³, F. Kiefer⁷, P. A. Wilson^{24,25}, G. Ricker²⁶, R. Vanderspek²⁶, D. W. Latham²⁷, S. Seager^{2,26,28}, J. M. Jenkins²⁹, E. Sokov^{22,30}, I. Sokova^{22,30}, A. Marchini³¹, R. Papini³², F. Salvaggio³², M. Banfi³², Ö. Baştürk³³, Ş. Torun³³, S. Yalçinkaya³³, K. Ivanov³⁴, G. Valyavin^{20,21,22}, E. Jehin⁶, M. Gillon¹⁷, E. Pakštienė³⁵, V.-P. Hentunen³⁶, S. Shadick³⁷, M. Bretton³⁸, A. Wünsche³⁸, J. Garlitz³⁹, Y. Jongen⁴⁰, D. Molina⁴¹, E. Girardin⁴², F. Grau Horta⁴³, R. Naves⁴⁴, Z. Benkhaldoun¹⁸, M. D. Jorner⁴⁵, M. Spencer⁴⁵, A. Bieryla²⁷, D. J. Stevens^{46,47}†, E. L. N. Jensen⁴⁸, K. A. Collins²⁷, D. Charbonneau²⁷, E. V. Quintana⁴⁹, S. E. Mullally⁵⁰ and C. E. Henze²⁹

Affiliations are listed at the end of the paper

Accepted 2021 May 25. Received 2021 May 25; in original form 2020 July 4

ABSTRACT

We announce the discovery of GPX-1 b, a transiting brown dwarf with a mass of $19.7 \pm 1.6 M_{\text{Jup}}$ and a radius of $1.47 \pm 0.10 R_{\text{Jup}}$, the first substellar object discovered by the Galactic Plane eXoplanet (GPX) survey. The brown dwarf transits a moderately bright ($V = 12.3$ mag) fast-rotating F-type star with a projected rotational velocity $v \sin i_* = 40 \pm 10 \text{ km s}^{-1}$. We use the isochrone placement algorithm to characterize the host star, which has effective temperature $7000 \pm 200 \text{ K}$, mass $1.68 \pm 0.10 M_{\odot}$, radius $1.56 \pm 0.10 R_{\odot}$, and approximate age $0.27^{+0.09}_{-0.15}$ Gyr. GPX-1 b has an orbital period of ~ 1.75 d and a transit depth of 0.90 ± 0.03 per cent. We describe the GPX transit detection observations, subsequent photometric and speckle-interferometric follow-up observations, and SOPHIE spectroscopic measurements, which allowed us to establish the presence of a substellar object around the host star. GPX-1 was observed at 30-min integrations by *TESS* in Sector 18, but the data are affected by blending with a 3.4 mag brighter star 42 arcsec away. GPX-1 b is one of about two dozen transiting brown dwarfs known to date, with a mass close to the theoretical brown dwarf/gas giant planet mass transition boundary. Since GPX-1 is a moderately bright and fast-rotating star, it can be followed-up by the means of the Doppler tomography.

Key words: stars: brown dwarfs – stars: individual: GPX-1 – stars: rotation – surveys: Astronomical Data bases – Galaxy: disc.

1 INTRODUCTION

Brown dwarfs (BDs) are substellar objects with masses in the range of ~ 13 – $80 M_{\text{Jup}}$. Objects within these mass limits are below the hydrogen-burning minimum mass of 0.07 – $0.08 M_{\odot}$ ($\sim 80 M_{\text{Jup}}$) and cannot sustain thermonuclear fusion of hydrogen or helium (Hayashi & Nakano 1963; Kumar 1963), but reactions with deuterium and lithium are possible (Burrows et al. 1997; Chabrier et al. 2000, 2014). The exact mass boundaries depend on the chemical composition of the substellar object (Baraffe et al. 2002; Spiegel, Burrows & Milsom 2011). The formation processes of BDs are still debated, but substellar objects above $\sim 13 M_{\text{Jup}}$ are generally considered

BDs regardless of formation mechanism or current location (Boss et al. 2007). It is still not well understood whether BDs are a product of protostellar cloud fragmentation or if they are formed in protoplanetary discs around young stars. Current statistics of the observed properties of BDs indicates that two distinct populations exist: massive BDs ($\gtrsim 40 M_{\text{Jup}}$), which are formed similar to binary stars, and low-mass BDs, which are formed as planets (e.g. Ma & Ge 2014; Wilson et al. 2016). However, this division of BDs into two populations is being challenged with the new discoveries of intermediate-mass BDs (Carmichael, Latham & Vanderburg 2019; Jackman et al. 2019; Carmichael et al. 2020; Šubjak et al. 2020).

The relatively large masses and radii of BDs (compared to most planets) should make them readily detectable in radial velocity (RV) and photometric surveys. However, most known BDs¹ have

* E-mail: pbenni@verizon.net (PB); burdanov.art@gmail.com (AYB)

★ NASA Sagan Fellow.

† Eberly Research Fellow.

¹<http://www.johnstonsarchive.net/astro/browndwarflist.html>

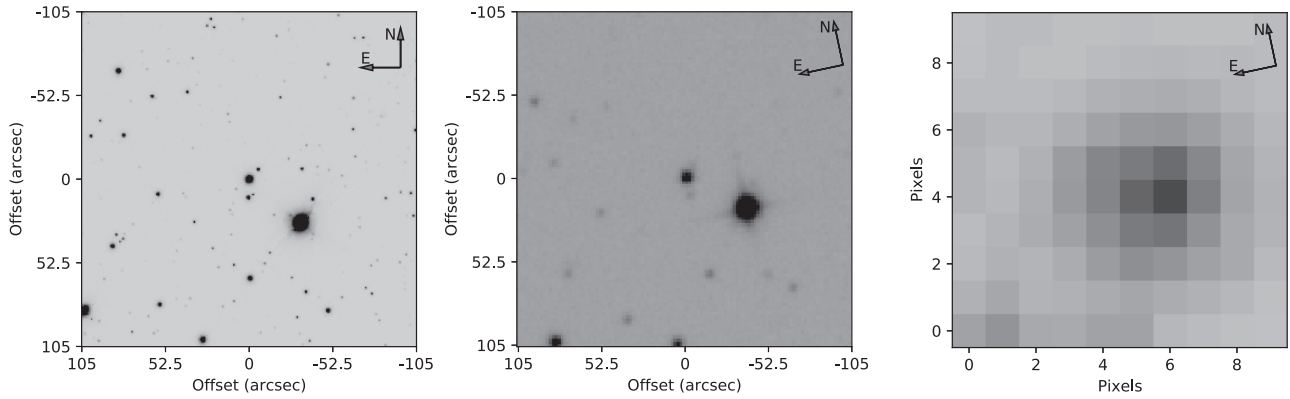


Figure 1. Left: Pan-Starrs i' image of a $210 \times 210 \text{ arcsec}^2$ region around GPX-1 ($V \sim 12$ mag), obtained with an image scale of $0.25 \text{ arcsec pixel}^{-1}$. Note the bright star HD 15691 ($V \sim 9$ mag) located 42 arcsec SW from GPX-1. Middle: image of the same field obtained with a telescope with an image scale of $1.85 \text{ arcsec pixel}^{-1}$. Right: *TESS* $210 \times 210 \text{ arcsec}^2$ ($10 \times 10 \text{ pixel}^2$) image of the same field of view (FoV).

been found as isolated objects, and far fewer BDs are known to be in multiple systems (Sahlmann et al. 2011; Kiefer et al. 2019). Transiting BDs are even rarer, but these systems provide a unique opportunity to probe the properties of these objects by making possible the measurement of their radii, masses, and obliquities, which can give initial glimpses into their dynamical history (Zhou et al. 2019). The lack of detections of BDs with orbital periods shorter than 10 yr around main-sequence stars has been known as the BD desert (Halbwachs et al. 2000; Marcy & Butler 2000; Grether & Lineweaver 2006). It is associated with the different formation mechanisms of low- and high-mass BDs and with instability of their orbits, where tidal interaction causes the loss of angular momentum and orbit shrinking until the engulfment of a BD by its host star (Armitage & Bonnell 2002; Pätzold & Rauer 2002). For BDs orbiting late-type stars with a deep convective layer, magnetic braking should speed up the merging. However, more and more detections ‘populate’ the desert (e.g. Wilson et al. 2016; Kiefer et al. 2019), while BDs with orbital periods shorter than 100 d still remain quite rare. A detailed understanding of the formation and evolution of BDs orbiting stars is still difficult due to the lack of statistical data.

Exoplanet RV and transit surveys keep expanding the current population of BDs (see the Exoplanet.eu data base; Schneider et al. 2011). Despite the fact that roughly half of the known transiting BDs were discovered with the use of space telescopes, ground-based exoplanet surveys detected a number of the BDs known to transit relatively bright host stars in the $V \leq 13$ range: KELT-1 (Sivert et al. 2012), HATS-70 (Zhou et al. 2019), WASP-30 (Anderson et al. 2011), and WASP-128 (Hodžić et al. 2018). Such systems allow more in-depth follow-up studies compared to systems with fainter host stars.

The ground-based transit surveys, which discovered the above-mentioned BDs transiting bright stars, have observed a substantial portion of the sky in an attempt to find new transiting planets. However, most of these surveys do not observe very dense parts of the Galactic plane in order to avoid problems associated with blending of the stars. This is especially true for wide-field surveys like WASP that had poor spatial resolution (the WASP image scale is $13.7 \text{ arcsec pixel}^{-1}$). Blending complicates the detection of transit signals and can significantly increase the rate of false-positive exoplanet candidates. The *Kepler/K2* space missions (Borucki et al. 2010; Howell et al. 2014) had better spatial resolution ($4 \text{ arcsec pixel}^{-1}$) than most ground-based exoplanet transit surveys,

and brought a significant contribution to the known sample by discovering 40 hot Jupiters and 6 BDs (Schneider et al. 2011), but *Kepler/K2* were limited by the fact that it observed only some parts of the sky. The *Transiting Exoplanet Survey Satellite (TESS)* survey (Ricker et al. 2014) that has been operating since 2018 will observe almost the whole sky, but it also has quite low spatial resolution ($20.25 \text{ arcsec pixel}^{-1}$). The future PLANetary Transits and Oscillation of stars (PLATO) mission (Rauer et al. 2014) has a resolution of $15 \text{ arcsec pixel}^{-1}$ and it will perform long-duration observations of only two sky fields. OGLE (Optical Gravitational Lens Experiment; Udalski 2003) is a large southern sky variability survey, which observes the Galactic bulge and disc with an image scale of $0.26 \text{ arcsec pixel}^{-1}$ that allows detection of transiting exoplanets in the dense stellar fields (e.g. Konacki et al. 2003; Pont et al. 2008). However, only small parts of the Galactic bulge and disc are observed with a cadence that allows transit detections (Udalski, Szymański & Szymański 2015).

Therefore, there is an opportunity for a dedicated exoplanet survey that will explore the Galactic plane with sufficient spatial resolution and cadence to find new transiting exoplanets. Motivated by this, we initiated the Galactic Plane exoplanet (GPX) survey. GPX is a multinational project involving a collaboration of amateur and professional astronomers from Europe, Asia, and North America. GPX evolved from the prototype KPS survey (Burdanov et al. 2016), which resulted in a discovery of the transiting hot Jupiter KPS-1 b (Burdanov et al. 2018). The main goal of GPX is to survey high-density star fields of the Galactic plane with moderately high image resolution of $2 \text{ arcsec pixel}^{-1}$ in order to find new transiting gas giants. As a secondary goal, the GPX survey performs search for peculiar variable stars (e.g. see Krushinsky et al. 2020). In this paper, we present the discovery of a transiting BD with a mass of $19.7 \pm 1.6 M_{\text{Jup}}$ and a radius of $1.47 \pm 0.10 R_{\text{Jup}}$ orbiting F2 star 2MASS 02332859+5601325 (henceforth referred to as the GPX-1) with a period of ~ 1.75 d. GPX-1 is located 42 arcsec from a bright ($V \sim 9$ mag) star HD 15691 (see Fig. 1). The proximity of this bright star dilutes the transit depth when photometric observations are done with a low spatial resolution.

The rest of the paper is organized as follows: Section 2 describes the GPX discovery wide-field photometry, high-precision photometric follow-up observations, speckle-interferometric observations, spectroscopic follow-up, and data reduction. Section 3 is devoted to the joint analysis of GPX-1 and its transiting BD. In Section 4

Table 1. General information about GPX-1. Position, distance, and motion information are based on *Gaia* DR2 data (Bailer-Jones et al. 2018). B , V , g' , r' , and i' magnitudes are from the APASS catalogue (Henden et al. 2015), J , H , and K_s magnitudes are from the 2MASS catalog (Skrutskie et al. 2006), and W_1 , W_2 , and W_3 are from the *WISE* catalogue (Wright et al. 2010).

Identifiers	GPX-1 b
	GPX-TF8A-1859 (GPX input catalogue ID)
	2MASS 02332859+5601325
	<i>Gaia</i> DR2 457317534880081152
	1SWASP J023328.42+560133.4
	GSC 3691:0475
	<i>TESS</i> TIC 245392284
RA (J2000.0)	02h 33m 28.606s
DEC (J2000.0)	+56° 01' 32.55"
Gal l	136.893301°
Gal b	-4.055172°
Distance	655 ± 17 pc
pmRA	-3.25 ± 0.067 mas y ⁻¹
pmDEC	0.05 ± 0.081 mas y ⁻¹
RV	-3.7 ± 5.26 km s ⁻¹
<i>TESS</i> mag	11.90 ± 0.01
APASS B mag	12.74 ± 0.08
APASS V mag	12.27 ± 0.05
APASS g' mag	12.46 ± 0.07
APASS r' mag	12.18 ± 0.04
APASS i' mag	12.12 ± 0.03
2MASS J mag	11.35 ± 0.026
2MASS H mag	11.22 ± 0.024
2MASS K_s mag	11.18 ± 0.021
<i>WISE</i> W_1 mag	11.08 ± 0.025
<i>WISE</i> W_2 mag	11.10 ± 0.022
<i>WISE</i> W_3 mag	10.64 ± 0.077

we discuss obtained results, and we summarize our findings in Section 5.

2 DISCOVERY AND FOLLOW-UP OBSERVATIONS

2.1 GPX transit detection photometry

The GPX survey telescope was built from readily available commercial equipment: a RASA-11 wide-field telescope (279 mm, $f/2.2$; Celestron, Torrance, CA USA), based at the private observatory Acton Sky Portal in Acton, MA, USA. The GPX survey covered 10 star fields with a Field of View (FoV) of $1.67 \times 1.26 \text{ deg}^2$ and 54 fields with a $2.52 \times 2.02 \text{ deg}^2$ FoV in 2015–2019, which were observed for 3–5 months with 150–180 h of image data collected per field. A detailed description of the GPX survey observations is presented in Burdanov et al. (2018).

The star GPX-1 (see Table 1) was observed with the RASA telescope from September to December 2016 with the Johnson–Cousins R_c band. Survey images were treated with the K-PIPE pipeline described in Burdanov et al. (2016). In short, the pipeline performs a calibration of the FITS images (bias, dark and flat-field corrections), extracts fluxes of all the stars in the FoV, conducts differential photometry, and performs a period search with the Box-fitting least-squares method (BLS; Kovács, Zucker & Mazeh 2002). Stars with low-noise light curves were selected as high-priority and their phase-folded light curves were examined visually. Using BLS, a strong peak corresponding to a ~ 1.7 d period in the

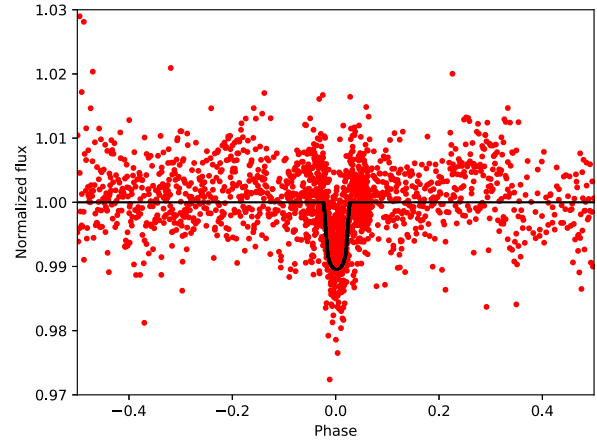


Figure 2. GPX discovery light curve as obtained with the RASA-11 wide-field telescope and folded with ~ 1.75 d period. The solid black line represents the best-fitting transit model.

periodogram of GPX-1 was found. The phase-folded light curve of GPX-1 is presented in Fig. 2. After obtaining an initial photometric ephemeris, we performed photometric, speckle-interferometric, and spectroscopic follow-up observations to investigate the nature of the system.

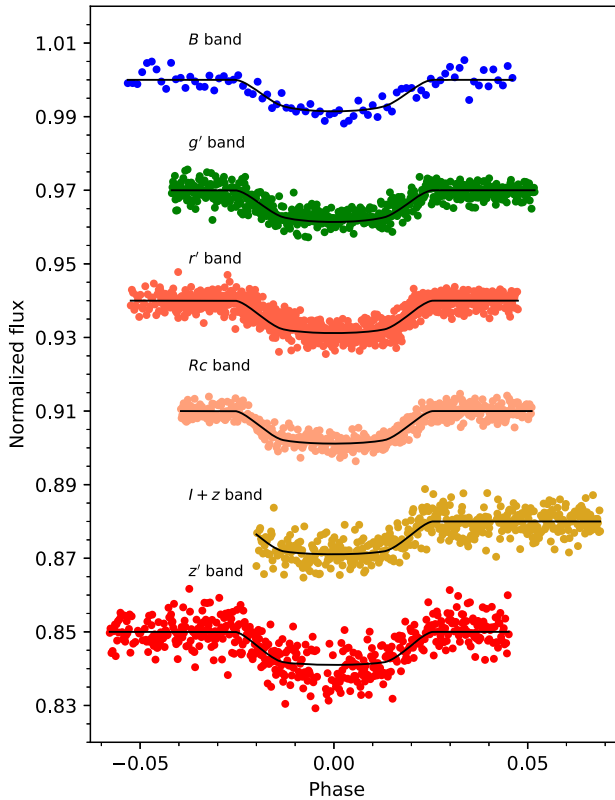
2.2 Photometric follow-up observations

We conducted a photometric follow-up campaign to observe transits of GPX-1 b with several goals: to confirm that the signals found in the GPX wide-field data were real; to refine the transit ephemeris; and to compare the depths of the transits in different filters to check their chromaticity to verify that the signal was not caused by an eclipsing binary. A dozen different telescopes participated in the follow-up campaign. The majority of those observations were performed by the small- and middle-aperture telescopes, which participate in the EXPANSION project (EXoPlanetary trANsit Search with an International Observational Network; Sokov et al. 2018). In particular, multi-colour observations of two GPX-1 b transits in 2017 with the 1-m telescope T100 of the TÜBİTAK National Observatory of Turkey (TUG) helped us to discard evident eclipsing binary scenario and allowed to request spectroscopic observations with the SOPHIE spectrograph (see Section 2.5). We used all available data for the initial characterization of the system, but here we will present only the most precise light curves from our observational sets, which were used to derive the system parameters.

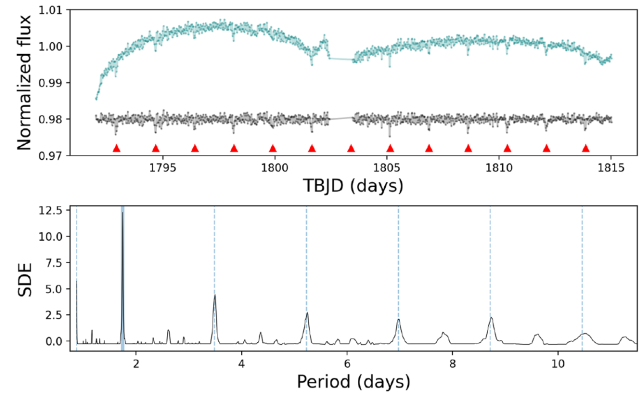
High-precision light curves of GPX-1 were obtained with four telescopes (see Table 2). Five transits were observed with the RC600 telescope of the Caucasian Mountain Observatory (CMO) of Sternberg Astronomical Institute (SAI) of Moscow State University (MSU) in g' , r' , and R_c filters (Berdnikov et al. 2020). Three partial transits were observed with the TRAPPIST-North telescope (Barkaoui et al. 2017; Jehin et al. 2011; Gillon 2011) at the Oukaïmeden Observatory in z' filter and in a custom near-infrared filter $I + z'$ (transmittance > 90 per cent from 700 nm). One full transit in R_c and B bands were obtained with the AZT-11 telescope of the Crimean Astrophysical Observatory (CrAO) and 1-m telescope of the Deokheung Optical Astronomy Observatory (DOAO) respectively. The MASTER telescope at the Kourouka Observatory was used to observe GPX-1 in out-of-transit phase in B , V , R , I filters to construct a spectral energy distribution (SED).

Table 2. Photometric follow-up observation log.

Observatory	Telescope	Detector	Date (filter)
CMO SAI MSU	RC600, $D = 60$ cm, F/7	Andor iKon-L BV	15 Sept 2019 (r'), 13 Oct 2019 (r') 8 Nov 2019 (R_c), 22 Nov 2019 (r') 06 Dec 2019 (g')
Oukaïmeden	TRAPPIST-N, $D = 60$ cm, F/8	Andor iKon-L BEX2 DD	16 Aug 2019 (z'), 23 Aug 2019 (z') 13 Sept 2019 ($I + z'$)
CrAO	AZT-11, $D = 125$ cm, F/13	FLI ProLine PL230	8 Nov 2019 (R_c)
DOAO	1-m, $D = 100$ cm, F/8	FLI ProLine PL-16803	21 Jan 2019 (B)

**Figure 3.** Transits of GPX-1 b in different bands as obtained with RC600, TRAPPIST-North, AZT-11, and DOAO 1-m telescopes. The observations are phase-folded, multiplied by the baseline (2nd order polynomial), and are shown in different colours (depending on the filter used). For each transit, the solid black line represents the best-fitting model. All transits were normalized and shifted vertically for visual clarity.

All obtained images were treated similarly: data reduction consisted of dark and flat-field corrections and aperture photometry with IRAF/DAOPHOT (Tody 1986). Photometric extraction was performed with different aperture sizes which were defined as 0.8, 1.0, 1.2, 1.5, 2.0, $3 \times \text{FWHM}$, where FWHM is the mean full width at half maximum of the stars' point spread function (PSF) in the image. Selection of the best aperture and comparison stars was made based on the minimization of the out-of-transit scatter of the light curve. We also controlled that the aperture centred around GPX-1 did not include any nearby stars. The resulting light curves are presented in Fig. 3, after period-folding and being multiplied by baseline polynomials to correct for systematic errors (see Section 3.2 for details). Achromatic transits with depths 0.9 per cent are clearly

**Figure 4.** Upper panel: *TESS* data for GPX-1 (TIC 245392284) from Sector 18. The teal line corresponds to the light curve from the Full Frame Images using a 2-pixel aperture, and black line is the final clean light curve. The red triangles mark the ~ 1.75 d period signal. Bottom panel: periodogram yielded by the transit search performed with the SHERLOCK pipeline, where the main ~ 1.75 d period signal and its harmonics are highlighted.

visible, which strengthens the hypothesis that the transiting body is not a star.

For the SED fit, we measured instrumental magnitudes of GPX-1 and nearby stars in the FoV and then used the APASS catalogue (Henden et al. 2015) to convert instrumental magnitudes to the standard ones.

2.3 *TESS* and WASP photometry

GPX-1 (TIC 245392284) was observed at 30-min integrations by *TESS* in Sector 18 in November 2019, which spans 13 orbital periods of GPX-1 b. Since GPX-1 was not observed with 2-min-cadence, the Science Processing Operations Center pipeline (SPOC; Jenkins et al. 2016) did not extract photometric flux nor attempted a transit search. The light curve of GPX-1 was extracted by the Quick-Look Pipeline (QLP; Huang et al. 2018, Huang et al. in preparation), but it was not included for candidate vetting procedures as in the vast majority of cases vetting is carried out for exoplanet candidates brighter than *TESS* mag of 10.5 (and *TESS* mag of GPX-1 is 11.9). However, even if GPX-1 light curve is included for vetting, it does not pass a predefined standard threshold for a transit signal (C. X. Huang, personal communication, 3 September 2019).

We obtained the light curve from the *TESS* full frame images (FFIs) using a 2-pixel aperture. The raw light curve (not corrected for systematics) is presented in the upper panel of Fig. 4. We removed the systematic trends in the data by performing decorrelation with quaternions (high-cadence vector time-series that describe *TESS* attitude based on observations of guide stars; Vanderburg et al. 2019) and the background flux outside the aperture. Then, we made use of

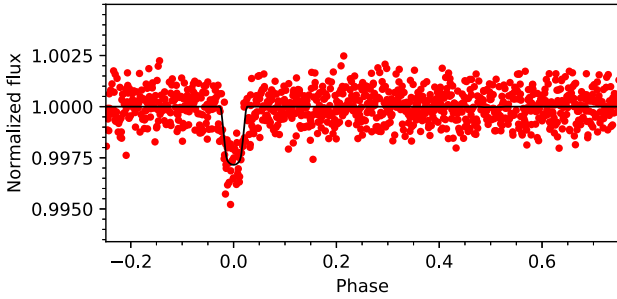


Figure 5. Phase-folded light curve of GPX-1 b as obtained using the *TESS* data. Due to a blending with a nearby star, obtained transit depth is ~ 0.25 per cent (compare to ~ 0.9 per cent from the ground-based data, see Fig. 3). The solid black line represents the best-fitting transit model.

the SHERLOCK pipeline (Pozuelos et al. 2020) to search for transit signals in the data. The pipeline performed transit search by means of the transit least-squares package (TLS; Hippke & Heller 2019). We successfully recovered the ~ 1.7 d period signal with a signal detection efficiency (SDE) of 12.3 and signal-to-noise ratio (SNR) of 18.0 (see Fig. 4). The SHERLOCK pipeline keeps searching for transit signals until there is no other signal left with $\text{SDE} > 5$ and $\text{SNR} > 5$ in the data. In our case, no other signals were found. Though the *TESS* light curve is heavily blended with the nearby 3.4 mag brighter star HD 15691 (see Fig. 1), we included it in our global modelling of the system with a dilution term, i.e. allowing the transit depth to be set by the ground-based observations. The resulting period-folded light curve is presented in Fig. 5, where a ~ 0.25 per cent transit is visible. We did not detect any signs of occultation signal in the *TESS* data and we place a 3σ upper limit on occultation depth of 0.04 per cent, what corresponds to ~ 0.1 per cent if there was no dilution from the nearby star in the *TESS* data. This limit translates into an upper limit on BD’s day side effective temperature of 3800 K, which does not contradict the equilibrium temperature from the global solution (see Section 4).

GPX-1 was also observed by the WASP-North telescope, which is now decommissioned (Pollacco et al. 2006). Observations were obtained in 2004–2008 (WASP ID 1SWASP J023328.42+560133.4²). The WASP telescope had a better image scale than *TESS*, but blending with aforementioned nearby star HD 15691 coupled with a poorer photometric precision (compared to *TESS*), prevented robust transit detections in the data.

2.4 Speckle-interferometric observations

We carried out speckle-interferometric observations of GPX-1 to identify any nearby companions, which might affect our transit photometry and spectroscopy, or potentially be the true source of the transit signal. Observations were performed with the use of the 6-m telescope of the Special Astrophysical Observatory (SAO) of the Russian Academy of Sciences (RAS) on 8 October and 1 December 2017. Both observations were performed using SAO speckle-interferometer (Maksimov et al. 2009) with 4.5×4.5 arcsec² FoV with a 100 nm-wide filter centred on the wavelength of 800 nm, which corresponds to the photometric *I* band. The length of the series was 2000 frames, and the exposure time per frame was 100 ms

²WASP time-series viewer is available at <https://exoplanetarchive.ipac.caltech.edu>

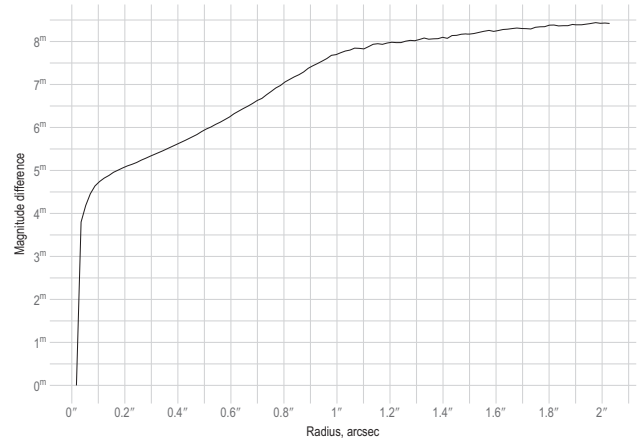


Figure 6. Results of SAO speckle-interferometer observations of GPX-1. The 3σ detection limit is plotted as a function of radius. The limits are 0.03 arcsec for a brightness difference $\Delta m = 0$ mag, 0.05 arcsec for $\Delta m = 3$ mag, and 0.1 arcsec for $\Delta m = 4.5$ mag.

and 50 ms for the nights of 2017 October 8 and December 1, respectively. Image processing included the calculation of the average power spectra of the series and construction of the corresponding autocorrelation functions. The search for companions was done by analysing autocorrelation functions. The calculated limits for the presence of components near GPX-1 are shown in Fig. 6. Based on the analysis of the SNR by series, we were unable to detect a visual companion of GPX-1, and we provide conservative limits on the presence of a secondary companion. The limits are 0.03 arcsec for a brightness difference $\Delta m = 0$ mag, 0.05 arcsec for $\Delta m = 3$ mag and 0.1 arcsec for $\Delta m = 4.5$ mag. These limits are consistent with the data obtained in both observational sets.

2.5 Spectroscopic observations

GPX-1 was observed with the SOPHIE spectrograph to obtain RV data to measure the mass of the transiting body. SOPHIE is dedicated to high-precision RV measurements with the 1.93-m telescope of the Haute-Provence Observatory (Perruchot et al. 2008; Bouchy et al. 2009). We used SOPHIE in High-Efficiency mode with a resolving power $R = 40\,000$ and slow readout mode. We obtained 16 observations between October 2017 and March 2018. Depending on observing conditions, exposure times ranged between 9 and 32 min in order to maintain an SNR of ~ 20 per pixel as constant as possible throughout the observations. This SNR was chosen as a compromise between precision and exposure time.

The spectra were extracted using the standard SOPHIE data reduction pipeline. We used a weighted cross-correlation function (CCF) with a G2-type numerical mask (Baranne et al. 1996; Pepe et al. 2002). We also tried other numerical masks and they provide results in agreement with the G2-type mask, but with larger uncertainties. The CCF has contrasts representing only ~ 2.2 per cent of the continuum and is broad, with a full width at half maximum (FWHM) of 64 ± 3 km s⁻¹.

We fitted the CCFs with Gaussians to measure the RVs, their errors bars, and the bisector spans (Table 3). Such broad and shallow CCFs allowed us to determine RVs with only a relatively low precision of ± 500 m s⁻¹. Still, the RVs show significant variations, which are in agreement with the period and phase obtained from the photometric transits (see Fig. 7 with the RV measurements and Fig. 8 with the Lomb–Scargle periodogram of the RVs). The semi-amplitude of a

Table 3. SOPHIE measurements of GPX-1.

BJD _{UTC} −2 458 000	RV (km s ^{−1})	1σ (km s ^{−1})	bisect.* (km s ^{−1})	exp. (s)	SNR [†]
038.5049	−12.76	0.52	0.42	792	23.0
041.4569	−16.32	0.49	1.55	536	23.5
053.5725	−16.43	0.53	−0.77	795	22.7
054.4488	−10.49	0.51	0.56	978	21.9
055.6264	−15.21	0.51	0.61	1207	22.4
057.5347	−13.81	0.47	−0.27	723	22.9
083.5412	−14.69	0.57	−2.12	1800	18.0
084.5573	−13.51	0.58	0.06	1800	19.3
085.5799	−11.45	0.49	−0.78	844	23.1
121.4556	−13.44	0.74	−5.93	1004	19.7
123.4021	−15.70	0.59	−1.52	875	22.3
171.3555	−11.81	0.53	0.70	1362	23.0
172.2931	−14.66	0.50	−1.77	1307	22.0
177.3268	−15.51	0.51	−0.37	1919	23.4
204.2990	−11.32	0.64	2.80	1800	18.6
206.2974	−10.32	0.51	1.17	1100	23.0

^aBisector spans; error bars are twice those of the RVs; ^bSNR per pixel at 550 nm.

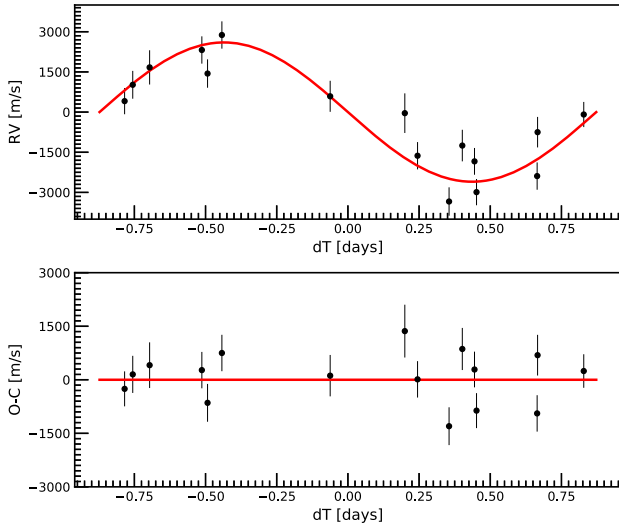


Figure 7. Top: SOPHIE radial velocity (RV) measurements of GPX-1 phase-folded at the 1.75 d period of the BD with the imposed best-fitting Keplerian model. Bottom: best-fitting residuals.

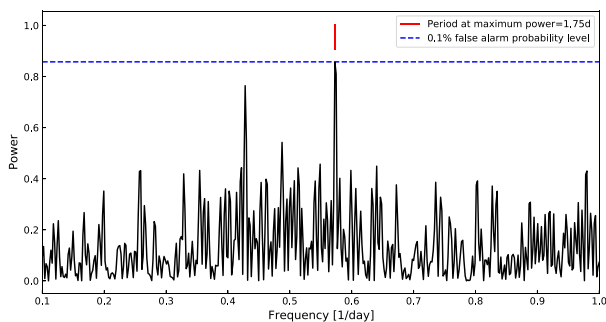


Figure 8. The Lomb–Scargle periodogram of the SOPHIE RV measurements. The most powerful peak on the periodogram corresponds to a period of 1.75 d.

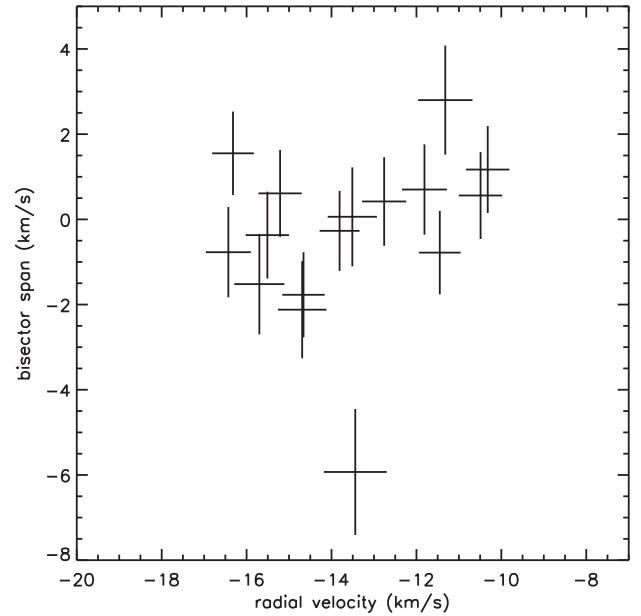


Figure 9. GPX-1 bisector span as a function of the RVs with 1σ error bars.

simple fit to the RVs is of order 2.5 km s^{-1} which would correspond to a $\sim 20 M_{\text{Jup}}$ companion.

To check if RV variations were caused by a blending scenario of stars with different spectral types, we measured RVs with a set of different stellar masks. In all cases, we obtained RV variations with similar amplitudes and we can conclude that the blending scenario is very unlikely. To assess possible change of the shape of spectral lines due to stellar activity or blends, we measured CCF bisector spans. Our measurements have low precision due to the broad, shallow CCFs, but they show no correlations with the RV variations (a Spearman correlation coefficient is 0.33; see Fig. 9). Also, the visual inspection of the CCF at a large velocity span does not suggest the presence of any background target. Therefore, we can conclude that the observed RV variations are caused by a substellar companion.

We carried out spectral classification and determination of metallicity using filtered and smoothed SOPHIE spectrum. First, we applied a median filter with a kernel of 0.2 \AA for suppression of short spikes from hot pixels, cosmic rays, etc. Next, we applied a Gaussian filter with a kernel of 0.4 \AA to enable matching of our spectral resolution with the templates from spectral libraries. We used a strength of hydrogen lines as a temperature criteria, as they are the least affected by differences in metallicity, and the G-band, which starts to appear in early F-type stars and which is slightly evident in our filtered spectrum. At the next step, we compared the object spectrum with templates from the CFLIB (Wu et al. 2011) and the MILES (Falcón-Barroso et al. 2011) spectral libraries. Parameters of the best matched templates were used to estimate the effective temperature, surface gravity and metallicity (see Fig. 10). We classified GPX-1 as an F2 star and we found stellar parameters to be: $T_{\text{eff}} = 7100 \pm 150 \text{ K}$, $\log g_* = 4.1 \pm 0.1$, $[\text{Fe}/\text{H}] = 0.2 \pm 0.1$. We provide conservative error bars as our spectrum has a relatively low SNR.

We could evaluate the line broadening parameter $v \sin i_* = 40 \pm 10 \text{ km s}^{-1}$ derived from the measured widths of the CCFs using the calibration of Boisse et al. (2010). This calibration stands for slower rotators and we evaluated a conservative uncertainty, but our

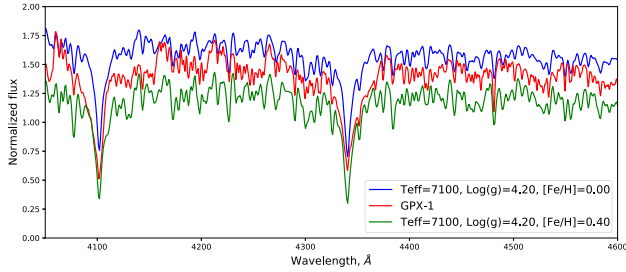


Figure 10. Filtered spectrum of the GPX-1 star in the 4000–4600 Å range and templates from the MILES spectral library (Falcón-Barroso et al. 2011). All spectra were normalized and shifted vertically for visual clarity.

estimation should be taken with caution. Thus, GPX-1 will benefit from additional spectroscopic observations.

3 DATA ANALYSIS

3.1 General considerations

GPX-1 has a spectral type F2 and is a fast rotator with a line broadening parameter $v \sin i_* = 40 \pm 10 \text{ km s}^{-1}$. This combination makes the inference of stellar parameters, such as the effective temperature T_{eff} , metallicity $[\text{Fe}/\text{H}]$, and surface gravity $\log g_*$ using spectra with low SNR challenging and unreliable due to the relatively small number of spectral absorption lines and their broadening. However, knowledge of a host star is crucial as all the parameters of a companion are obtained relative to the host star, primary R_* and T_{eff} .

To address this problem, we used the MCMCI tool to perform an integrated modelling of GPX-1 and its transiting BD. MCMCI is a code that utilizes Markov Chain Monte Carlo (MCMC) stochastic simulations of the RV and photometric data to analyse the posterior probability distribution function (PDF) of the model parameters coupled with the isochrone placement algorithm. The MCMCI code and the logic behind it are described in details in Bonfanti & Gillon (2020) and here we outline the main aspects of our analysis. The MCMCI tool performs an integrated three-step analysis:

- (i) Photometric light curves are analysed to infer a mean stellar density ρ_* ;
- (ii) The stellar density ρ_* together with the stellar metallicity $[\text{Fe}/\text{H}]$, and effective temperature T_{eff} (computed from photometric colour) are used to infer the stellar mass M_* , radius R_* and age by the isochrone placement algorithm, which considers pre-computed grids of isochrones and tracks based on the PAdova and TRieste Stellar Evolutionary Code (PARSEC, v1.2S; Marigo et al. 2017). The isochrone placement algorithm is presented in detail in Bonfanti et al. (2015), Bonfanti, Ortolani & Nascimbeni (2016);
- (iii) Inferred stellar parameters are used to recover companion’s radius R_{BD} and mass M_{BD} using the photometric and RV data sets.

Similar to the MCMC code described in Gillon et al. (2012), the MCMCI tool utilizes a Keplerian model by Murray & Correia (2010) and a transit model by Mandel & Agol (2002) to jointly fit the RV and photometric data.

We would like to note that interstellar dust extinction plays a major role when observing a distant object with low Galactic latitudes by attenuating and reddening observed photometric magnitudes. In the case of GPX-1, its distance is $655 \pm 17 \text{ pc}$ (Bailer-Jones et al. 2018) and its Galactic latitude is $b \sim -4 \text{ deg}$ which suggests

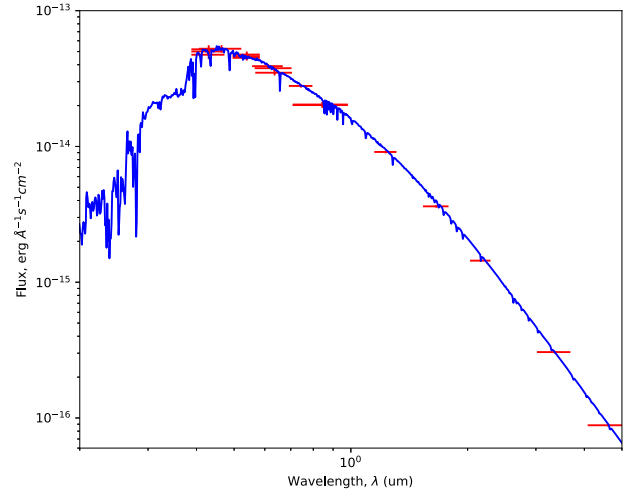


Figure 11. The APASS (B, V, g', r', i'), 2MASS (J, H, K_s), WISE ($W1, W2$), MASTER (B, V, R, I), and TRAPPIST-North (B, V, R_c, I_c) spectral points are shown. The blue curve is a model for the star with $T_{\text{eff}} = 7200 \text{ K}$, $R_* = 1.64 R_\odot$, $\log g_* = 4.2$ and $[\text{Fe}/\text{H}] = 0.43$ at 655 pc and $E(B - V) = 0.18$.

non-negligible effect of dust extinction. Therefore, as we compute effective temperature T_{eff} from the photometric colour, we need to deredden the photometric colour index of GPX-1. To make this correction, we constructed a SED of GPX-1 using available photometric data (see Fig. 11). We used data from available catalogs and observations made with the MASTER telescope (Gorbovskoy et al. 2013) and with the TRAPPIST-North telescope. We performed a fit using a grid of ATLAS9 stellar atmosphere models (Castelli & Kurucz 2003) with a constant *Gaia* DR2 distance, uniform priors on $\log g_*$ in the range 3.9 – 4.3 and $[\text{Fe}/\text{H}]$ in the range 0.0, – 0.4, to determine the amount of interstellar reddening. Our choice of priors’ range is justified by the analysis of the SOPHIE spectra. Our best-fit parameters are: $T_{\text{eff}} = 7200 \pm 150 \text{ K}$, $R_* = 1.6 \pm 0.1 R_\odot$, $[\text{Fe}/\text{H}] = 0.43 \pm 0.2$ and $E(B - V) = 0.18 \pm 0.1$. The derived value of reddening is in a good agreement with the interpolated values from Chen et al. (2019). Thus, GPX-1 colour and magnitude corrected for interstellar extinction are: $(B - V)_0 = 0.3 \pm 0.1 \text{ mag}$ and $V_0 = 11.8 \pm 0.1 \text{ mag}$.

The stellar metallicity $[\text{Fe}/\text{H}]$ from the SED fit, the dereddened $(B - V)_0$ colour index, and the stellar luminosity L_* (computed from the dereddened V_0 magnitude and the distance from *Gaia* DR2 catalogue (Gaia Collaboration 2018)) were used as priors. The stellar effective temperature T_{eff} (computed from $(B - V)_0$ colour), stellar luminosity L_* (computed from the V_0 magnitude and the distance), and mean density ρ_* (computed from light curves) were the input parameters for computing M_* , R_* , and the age from isochrones.

As the GPX-1 star is a fast rotator, its shape is oblate. This causes poles of the star to have a higher surface gravity, and thus higher temperature. We assessed the ratio between the equatorial and polar effective temperatures $T_{\text{eff,eq}}/T_{\text{eff,p}}$ as a function of flattening using the work of Espinosa Lara & Rieutord (2011). We assumed that we observed GPX-1 edge on and thus $v_{\text{eq}} \sim 40 \text{ km s}^{-1}$. In this scenario, we obtained flattening parameter $\epsilon = 1 - R_p/R_{\text{eq}} < 0.01$, where R_p/R_{eq} is the ratio between the polar and equatorial radii. We obtained $T_{\text{eff,eq}}/T_{\text{eff,p}} \approx 1$ making the effect of gravity darkening not significant. Using Barnes (2009), we estimate that the effect of gravity darkening will not be detectable in the *TESS* data because of the dilution of a nearby star and because of the 30-min integration

time. Thus, we did not take it into account in our modelling of the system.

3.2 Global analysis

Before performing a global MCMC analysis of the available high-precision photometric and RV data, we performed a preliminary analysis of each light curve. The goal of this analysis was to account for correlations of the extracted photometric fluxes with the external environmental and/or instrumental parameters by obtaining a proper baseline correction model. A baseline model giving the minimum Bayesian information criterion (BIC; Schwarz 1978) was selected for every light curve (see Gillon et al. 2012 and Burdanov et al. 2018 for a more detailed description of the applied method). In most cases, corrections for position drift of stars on a CCD and rapid changes of FWHM were applied using 2nd order polynomial.

For our global analysis of all the data sets, the following parameters (with their normal prior distributions) were used as jump parameters in our MCMC simulations and were allowed to vary :

- (i) the BD orbital period P (1.7445 ± 0.0001 d);
- (ii) the BD transit duration W (0.088 ± 0.005 d);
- (iii) the BD mid-transit time T_0 (2458770.24 ± 0.01 BJD_{TDB});
- (iv) the ratio of the BD and host star areas (R_{BD}/R_{\star})², where R_{BD} is the BD radius and R_{\star} is the stellar radius (0.8 ± 0.2 per cent);
- (v) the occultation depth dF_{occ} in *TESS* filter (0.05 ± 0.025 per cent);
- (vi) the impact parameter $b' = a \cos i_{\text{BD}}/R_{\star}$ for a circular orbit, where a_{BD} is the semi-major axis and i_{BD} is the orbital inclination of the BD (0.86 ± 0.05);
- (vii) the parameter $K_2 = K \sqrt{1 - e^2} P^{1/3}$, where K is the radial velocity orbital semi-amplitude;
- (viii) $\sqrt{e} \sin \omega$ and $\sqrt{e} \cos \omega$ parameters, where ω is the argument of periastron;
- (ix) the effective temperature T_{eff} of the host star computed from $(B - V)_0$ colour and metallicity [Fe/H] from the SED fit;
- (x) the combinations $c_1 = 2u_1 + u_2$ and $c_2 = u_1 - 2u_2$ of the quadratic limb-darkening coefficients u_1 and u_2 .

Quadratic limb-darkening (LD) law coefficients u_1 and u_2 with normal priors distributions were interpolated from the paper by Claret, Hauschildt & Witte (2012) and applied to the data in each photometric band. We converted all time-stamps of our measurements from HJD_{UTC} to BJD_{TDB} (Eastman, Siverd & Gaudi 2010). Then, we ran one relatively short MCMC chain of 20 000 steps to obtain a correction factor (CF) for every light curve, which was used to multiply initial photometric errors. This procedure is done to rescale the photometric errors and account for over- or underestimation of photometric noise (see Gillon et al. 2012 and Burdanov et al. 2018 for the details). Once proper CFs were obtained, five 100 000-step chains were executed with starting points inferred from perturbed BLS solutions and with a 20 per cent burn-in phase. Convergence of the chains was checked with the use of Gelman-Rubin statistical test (Gelman & Rubin 1992). The Gelman-Rubin statistic was less than 1.04 for every jump parameter. Parameters of the BD were deduced from the set of jump parameters and stellar parameters (M_{\star} , R_{\star}) inferred from isochrones. Deduced parameters of the system for a circular orbit are presented in Table 4 (median values of the posterior PDFs and their respective 1σ limits) and the results of the analysis are presented in the next section. We also performed a second analysis of the data where eccentricity was allowed to float. We inferred a 3σ upper limit on orbital eccentricity of 0.1.

Table 4. Inferred parameters of GPX-1 system: median values of the posterior PDFs and their respective 1σ limits.

Output parameters from the global MCMC analysis	
Jump parameters	Value
Orbital period P (d)	1.744579 ± 0.000008
Transit width W (d)	0.087 ± 0.002
Mid-transit time T_0 (BJD _{TDB})	$2458770.23823 \pm 0.00040$
$b' = a \cos i_{\text{BD}}/R_{\star}$ (R_{\star})	$0.82^{+0.02}_{-0.03}$
BD/star area ratio (R_{BD}/R_{\star}) ² (per cent)	0.90 ± 0.03
dF_{occ} (<i>TESS</i> band) (per cent)	< 0.1 (3σ)
K_2 (m s^{-1})	2780 ± 210
$\sqrt{e} \sin \omega$	0 (fixed)
$\sqrt{e} \cos \omega$	0 (fixed)
T_{eff} (K)	7000 ± 200
[Fe/H] (dex)	0.35 ± 0.1
$(B - V)_0$ colour (mag)	0.37 ± 0.04
Luminosity L_{\star} (L_{\odot})	5.33 ± 0.40
Deduced stellar parameters	
Mass M_{\star} (M_{\odot})	1.68 ± 0.10
Radius R_{\star} (R_{\odot})	1.56 ± 0.10
Mean density ρ_{\star} (ρ_{\odot})	0.44 ± 0.10
Surface gravity $\log g_{\star}$ (cgs)	4.27 ± 0.05
Age (Gyr)	$0.27^{+0.09}_{-0.15}$
Deduced BD parameters	
K (m s^{-1})	2310 ± 180
BD/star radius ratio R_{BD}/R_{\star}	0.095 ± 0.002
Orbital semi-major axis a (au)	0.0338 ± 0.0003
a/R_{\star}	$4.67^{+0.55}_{-0.32}$
Orbital eccentricity e	0 (fixed)
Orbital inclination i_{BD} (deg)	$79.9^{+0.7}_{-0.6}$
Argument of periastron ω (deg)	–
Surface gravity $\log g_p$ (cgs)	4.37 ± 0.06
Mean density ρ_p (ρ_{Jup})	$6.2^{+1.3}_{-1.0}$
Mass M_{BD} (M_{Jup})	19.7 ± 1.6
Radius R_{BD} (R_{Jup})	1.47 ± 0.10
Roche limit a_R (au)	0.00754 ± 0.00048
a/a_R	4.5 ± 0.3
Equilibrium temperature T_{eq} (K)	2300 ± 48
Irradiation I_{BD} [I_{Earth}]	4650 ± 370

4 RESULTS AND DISCUSSION

We obtained a mass and a radius of the host star of $1.68 \pm 0.10 M_{\odot}$ and $1.56 \pm 0.10 R_{\odot}$ respectively. Given an RV semi-amplitude of $2309 \pm 180 \text{ m s}^{-1}$ and a transit depth of 0.90 ± 0.03 per cent, we estimate GPX-1 b to have a mass of $19.7 \pm 1.6 M_{\text{Jup}}$ and a radius of $1.47 \pm 0.10 R_{\text{Jup}}$. Based on these results from the data modelling, achromaticity of the transit depths, the lack of a visual companion near GPX-1, and a lack of bisector variations, we are confident that the results demonstrate that the F2 star GPX-1 has a BD companion.

With its ~ 1.75 d period and ~ 80 deg inclination, GPX-1 b enters a small set of transiting and short-period BDs, where similar BDs are HATS-70 b ($P \sim 1.9$ d; Zhou et al. 2019) and KELT-1 b ($P \sim 1.2$ d; Siverd et al. 2012). All three of these BDs orbit A or F-type stars, which combined with their proximity to their host stars, leads to them receiving an extreme amount of radiation, and hence they have high equilibrium temperatures. For GPX-1 b, its irradiation is a factor of 4650 ± 370 greater than that of the Earth, and its equilibrium temperature, assuming complete heat redistribution and zero albedo, is 2300 ± 48 K. However, its radius is 7 per cent larger than that of the $13 M_{\text{Jup}}$ HATS-70 b ($1.384^{+0.079}_{-0.074} R_{\text{Jup}}$), which receives almost twice

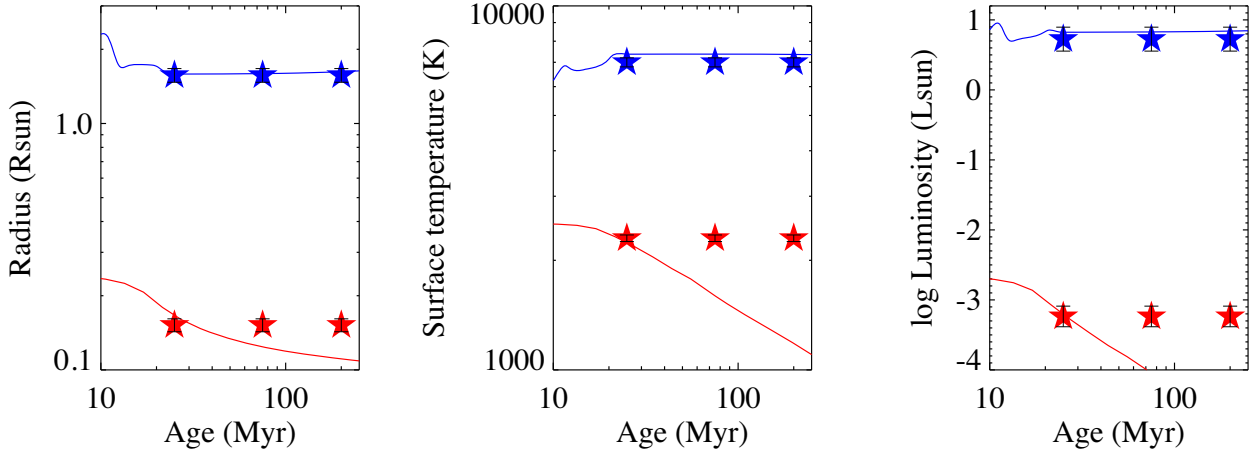


Figure 12. Evolutionary state of the GPX-1 system. In each panel, the blue curve represents the PARSEC (v1.2S) evolutionary track for the GPX-1 primary star (Marigo et al. 2017), assuming the mass and $[\text{Fe}/\text{H}]$ from the global solution; red curves represent the same for the GPX-1 b brown dwarf, except using the substellar evolutionary models of Phillips et al. (2020). Blue (red) symbols represent the observed stellar (brown dwarf) properties at three ages: 200 Myr (close to the median estimate from our global solution), 75 Myr, and 25 Myr (representing the best fit to both the components simultaneously).

as much irradiation as GPX-1 b. One important difference between these two young systems is the age, with HATS-70 b, estimated to be $0.81^{+0.5}_{-0.33}$ Gyr and for GPX-1 b to be only $0.27^{+0.09}_{-0.15}$ Gyr (or 270^{+90}_{-150} Myr; median value of the posterior PDF and its respective 1σ limits).

Unfortunately, our age estimate from the MCMCI code (which is based on the isochrone placement algorithm) has large uncertainties and GPX-1 is too hot for the application of gyrochronology relations, through which an age could be independently estimated from the stellar rotation rate. Also, we could not detect any youth indicators basing on available low SNR spectra, and GPX-1 is not presented in any X-ray data base. Some methods, such as lithium abundances, require additional high SNR spectra.

We checked whether the GPX-1 system was a member of the nearby open cluster Trumpler 2 (Kharchenko et al. 2007), which has an age estimate of ~ 89 Myr obtained by Frolov et al. (2006), ~ 84 Myr by Kharchenko et al. (2013) and ~ 92 Myr by Bossini et al. (2019) using *Gaia* DR2 data. Trumpler 2 has an angular radius of 0.45 deg and which is located at the same distance as GPX-1 (670 pc). Kharchenko et al. (2012b) rated the probability of GPX-1 membership in that cluster according to its angular distance as 0 per cent, according to proper motion as 4.7 per cent, and according to 2MASS photometry as 90 per cent and 100 per cent for $J - K_s$ and $J - H$ respectively. In addition, we tested if GPX-1 was a member of Trumpler 2 using *Gaia* DR2 parallaxes, proper motions and RVs. We derived cluster parameters as a local maximum in a 6D space (Ra, Dec, distance, pmRa, pmDec, RV): Ra = 39.32634° , Dec = 55.93867° , distance = 711 pc, pmRa = 1.60 mas yr^{-1} , pmDec = $-5.27 \text{ mas yr}^{-1}$, RV = -4.77 km s^{-1} . Corresponding parameters of GPX-1 are presented in Table 1. There is a separation of 60 pc at the present time, and the minimum separation of 27 pc will occur in 4.5 Myr, whereas a linear radius of Trumpler 2 for its distance and angular radius is 5.6 pc. Thus, we believe that GPX-1 was never a member of Trumpler 2. The same conclusion about membership of the GPX-1 in Trumpler 2 was obtained in Cantat-Gaudin & Anders (2020), using UPMASK procedure applied to the *Gaia* DR2 astrometric data (Cantat-Gaudin et al. 2018).

We used the basic physical properties of GPX-1 b and its host star together to infer the evolutionary state of the system. Fig. 12 shows the expected evolution of both the star and BD in radius, T_{eff} ,

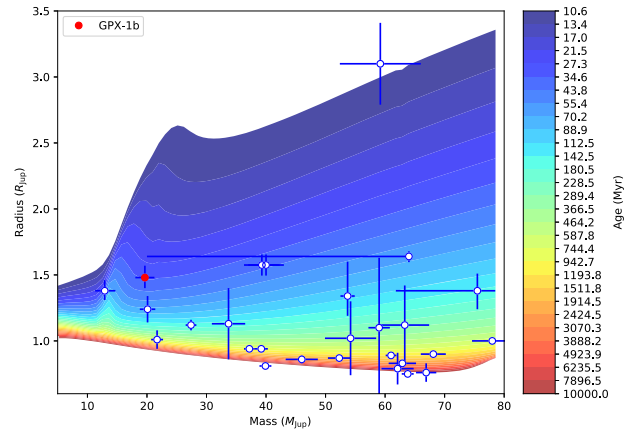


Figure 13. Mass–radius relationship of a set of known transiting brown dwarfs ($\sim 13\text{--}80 M_{\text{Jup}}$) as of May 2020 and isochrones from the evolutionary models of Phillips et al. (2020).

and luminosity, based on their masses and metallicity. The stellar track is from the PARSEC models (v1.2S; Marigo et al. 2017), whereas the BD track is from the substellar models of Phillips et al. (2020). They are compared with the measured/inferred properties at three different ages: 200 Myr (close to the median estimate from our global solution), 75 Myr, and 25 Myr (chosen to match the observed properties of both the star and BD simultaneously).

Taken at face value, all of the BD’s properties are consistent with it being in an early stage of contraction at ~ 25 Myr, requiring no inflation. At that age, the properties of the host star are also simultaneously consistent with expectation. To be clear, the T_{eff} adopted here for the BD is its equilibrium temperature T_{eq} from the global solution, which might not be the same as the T_{eff} that is predicted by the models. Alternatively, an age of 75 Myr could be correct, in which case the BD radius is somewhat inflated, but much less so than for an age of 200 Myr.

Regarding its position on the mass-radius diagram of known transiting BDs (see Fig. 13), GPX-1 b is among the largest and youngest BDs that happen to transit their host stars. If its true age is close to a value of $0.27^{+0.09}_{-0.15}$ Gyr obtained from our global modelling,

then it is significantly inflated. Then, such an object could serve as a testbed for radius inflation theories.

We expect GPX-1 b to have a low projected obliquity as massive exoplanets and BDs tend to be aligned (Hébrard et al. 2011; TriAUD 2018), but Rossiter-McLaughlin observations should confirm this. Such a BD with measured obliquity could be important for further understanding of the origins of short-period BDs.

Assuming that the host star and the BD are black bodies, and that the thermal energy dominates, measuring the observed occultation depth can reveal the BD's effective temperature. Alternatively, we can assess expected occultation depth if T_{eff} of GPX-1 b is close to its T_{Eq} from the global solution. In this case, occultation depth is expected to be 0.025 per cent, 0.05 per cent and 0.09 per cent for J , H , and K_s bands respectively. In the case of no heat redistribution, occultation depth is expected to be 0.08 per cent, 0.12 per cent and 0.17 per cent for J , H , and K_s bands, respectively.

Given a projected rotational velocity $v \sin i_* = 40 \pm 10 \text{ km s}^{-1}$ and assuming that we observe GPX-1 edge on, the rotation period of GPX-1 appears to be synchronized with the BD orbit within $1-2\sigma$. The system will be in a pseudo-equilibrium state if $L > L_{\text{crit}}$, where L is the total angular momentum of the system and L_{crit} is the critical angular momentum defined as (Damiani & Lanza 2015; Damiani & Díaz 2016)

$$L_{\text{crit}} = 4 \left(\frac{G^2 M_*^3 M_{\text{BD}}^3}{27 M_* + M_{\text{BD}}} (\beta C_* + C_{\text{BD}}) \right)^{1/4},$$

where G is the gravitational constant, M_* is the stellar mass, M_{BD} is the mass of the BD, C_* is the moment of inertia of the star, C_{BD} is the moment of inertia of the BD. Parameter β is defined as $\Omega_* n_{\text{BD}}$, where Ω_* is the angular velocity of the star, $n_{\text{BD}} = (G(M_* + M_{\text{BD}})/a^3)^{1/2}$ is the mean motion of the BD. In the case of orbital synchronization $\beta = 1$, meaning that the GPX-1 system is in a pseudo-equilibrium state as $L > L_{\text{crit}}$.

We also assessed stability of the system and found it to be stable as $L_{\text{orb}} > (4 - \beta)(C_* + C_{\text{BD}})n_{\text{BD}}$, where L_{orb} is the orbital angular momentum defined as

$$L_{\text{orb}} = \left(G \frac{M_*^2 M_{\text{BD}}^2}{M_* + M_{\text{BD}}} a(1 - e^2) \right)^{1/2},$$

where a is the semimajor axis and e is the orbital eccentricity of the BD.

We assessed the time needed for the system to synchronize using the work of Barker & Ogilvie (2009). Value of tidal spin-up time τ_{Ω} using the in-spiral time of the orbit τ_a , shows that τ_{Ω} does not exceed 250 Myr, if the stellar tidal dissipation parameter $Q'_* < 2 \times 10^7$ (which supports our age estimate of 270_{-150}^{+90} Myr from the isochrone placement algorithm). It means that during the system lifetime, it can go into a synchronized state due to tidal interaction.

5 CONCLUSIONS

We presented here the discovery of GPX-1 b, a transiting BD on a short circular orbit with a mass of $19.7 \pm 1.6 M_{\text{Jup}}$ and a radius of $1.47 \pm 0.10 R_{\text{Jup}}$. The BD transits a moderately bright fast-rotating F-type star with a projected rotational velocity $v \sin i_* = 40 \pm 10 \text{ km s}^{-1}$. Due to the small number of spectral absorption lines and their broadening, we used an isochrone placement algorithm (Bonfanti et al. 2015, 2016) to perform stellar characterization of GPX-1. We obtained stellar effective temperature $T_{\text{eff}} = 7000 \pm 200 \text{ K}$, mass $1.68 \pm 0.10 M_{\odot}$, radius $1.56 \pm 0.10 R_{\odot}$ and approximate age 270_{-150}^{+90} Myr. GPX-1 will benefit from additional spectroscopic observations with high SNR (> 100) to obtain more precise value

of its projected rotational velocity and to search for possible youth indicators.

We used the basic physical properties of GPX-1 b and its host star together to infer the evolutionary state of the system. An age of ~ 25 Myr matches the observed properties of both the star and BD simultaneously. In this case, no radius inflation is required. If the true age is 75 Myr, then the BD radius is inflated, but much less than that for an age of 200 Myr. We checked whether the GPX-1 system was a member of the nearby open cluster Trumpler 2 (Kharchenko et al. 2007) and we believe that GPX-1 was never a member of Trumpler 2.

We find the rotation period of GPX-1 to be synchronized with the BD orbit within $1 - 2\sigma$. The system is also in a pseudo-equilibrium state and stable. The value of tidal spin-up time does not exceed 250 Myr, which supports our age estimate from the isochrone placement algorithm (270_{-150}^{+90} Myr).

Since GPX-1 was not observed by *TESS* with 2-min integrations, the SPOC pipeline did not extract photometric flux nor attempted a transit search. The light curve of GPX-1 was extracted by the QLP, but no transit search was carried out as QLP reports exoplanet candidates only to *TESS* mag of 10.5 (and *TESS* mag of GPX-1 is 11.9). Transit recovery of GPX-1 b in the *TESS* data is complicated by the blending by the nearby bright star HD 15691. The same star blending issue is applicable to the WASP photometry, which prevents robust transit detections in the data. These facts provide a proof of concept of the GPX survey's scientific value and motivate us to continue its operations. The *TESS* mission brings exoplanet hunting into a new era with the delivery of very high-precision photometry of bright stars across the sky, beyond the ability of most ground-based telescopes. *TESS* will survey most of the sky over 2 yr with thousands of expected planet discoveries (Barclay, Pepper & Quintana 2018). However, a number of transiting gas giants and BDs may still be discovered in crowded fields (including open clusters) when observed by ground-based surveys, and even in the *TESS* data, they might be difficult to detect (see figs 3 and 4 in Barclay et al. 2018). Thus, the GPX survey and similar set ups might find a niche in the *TESS* era and contribute by discovering new transiting gas giants and BDs in crowded fields.

ACKNOWLEDGEMENTS

The authors would like to thank the anonymous reviewer for their time and attention. The constructive comments we received helped us to improve the quality of the paper.

This research has made use of the Exoplanet Orbit Database, the Exoplanet Data Explorer at exoplanets.org, Extrasolar Planets Encyclopaedia at exoplanets.eu, and the NASA Exoplanet Archive, which is operated by the California Institute of Technology under contract with the National Aeronautics and Space Administration under the Exoplanet Exploration Program. This publication makes use of data products from the Wide-field Infrared Survey Explorer, which is a joint project of the University of California, Los Angeles, and the Jet Propulsion Laboratory/California Institute of Technology, funded by the National Aeronautics and Space Administration. This research was made possible through the use of the AAVSO Photometric All-Sky Survey (APASS), funded by the Robert Martin Ayers Sciences Fund and NSF AST-1412587. This research made use of Aladin (Bonnarel et al. 2000). IRAF is distributed by the National Optical Astronomy Observatory, which is operated by the Association of Universities for Research in Astronomy, Inc., under cooperative agreement with the National Science Foundation. This research made use of ASTROPY,³ a community-developed core

³<http://www.astropy.org>

PYTHON package for Astronomy (Astropy Collaboration 2013; Price-Whelan et al. 2018).

We acknowledge the use of TESScut.MAST data from full frame time series images (FFI) collected by the *TESS* mission, which are publicly available from the Mikulski Archive for Space Telescopes (MAST). Funding for the *TESS* mission is provided by NASA's Science Mission directorate. Resources supporting this work were provided by the NASA High-End Computing (HEC) Program through the NASA Advanced Supercomputing (NAS) Division at Ames Research Center for the production of the SPOC data products.

PB thanks Bruce Gary, the XO survey, and the KELT survey for furthering his education in exoplanet research. AYB would like to thank Catarina Fernandes and Julien de Wit for helpful discussions about the system. Organization of the EXPANSION project (ES), follow-up campaign of the photometry observations, speckle-interferometry observations with 6-m telescope BTA were supported by the Russian Science Foundation grant 19-72-10023. The work of VK was supported by the Ministry of Science and Higher Education of the Russian Federation, topic no. FEUZ-0836-2020-0038. This work was partly supported by the Ministry of Science and Higher Education of the Russian Federation (project no. FZZE-2020-0024) and Irkutsk State University (project no. 111-14-306). This work was partially supported by the Ministry of Science and Higher Education of the Russian Federation (project nos. FEUZ-2020-0030 and 075-15-2020-780). TRAPPIST-North is a project funded by the University of Liege, in collaboration with Cadi Ayyad University of Marrakech (Morocco). EJ and MG are F.R.S.-FNRS Senior Research Associates. The research leading to these results has received funding from the ARC grant for Concerted Research Actions financed by the Federation Wallonia-Brussels and from the International Balzan Prize Foundation. TRAPPIST is funded by the Belgian National Fund for Scientific Research (Fond National de la Recherche Scientifique, FNRS) under the grant FRFC 2.5.594.09.F. EP acknowledges the Europlanet 2024 RI project funded by the European Union's Horizon 2020 Framework Programme (grant agreement no. 871149). AB acknowledge the support from the Program of Development of Lomonosov Moscow State University (Leading Scientific School 'Physics of stars, relativistic objects and galaxies'). OB thanks TÜBİTAK National Observatory for a partial support in using the T100 telescope with the project number 19AT100-1346. ODSO is supported by Portuguese national funds through Fundação para a Ciência e a Tecnologia (FCT) in the form of a work contract (DL 57/2016/CP1364/CT0004), institutional funds UIDB/04434/2020 and UIDP/04434/2020, and scientific projects funds PTDC/FIS-AST/28953/2017 and POCI-01-0145-FEDER-028953.

DATA AVAILABILITY

Data available on request. The data underlying this article will be shared on reasonable request to the corresponding author.

REFERENCES

- Anderson D. R. et al., 2011, *ApJ*, 726, L19
 Armitage P. J., Bonnell I. A., 2002, *MNRAS*, 330, L11
 Astropy Collaboration, 2013, *A&A*, 558, A33
 Bailer-Jones C. A. L., Rybizki J., Fouesneau M., Mantelet G., Andrae R., 2018, *AJ*, 156, 58
 Baraffe I., Chabrier G., Allard F., Hauschildt P. H., 2002, *A&A*, 382, 563
 Baranne A. et al., 1996, *A&AS*, 119, 373
 Barclay T., Pepper J., Quintana E. V., 2018, *ApJS*, 239, 2
 Barkaoui K., Gillon M., Benkhaldoun Z., Emmanuel J., Elhalkouj T., Daassou A., Burdanov A., Delrez L., 2017, *J. Phys.: Conf. Ser.*, 869 012073
 Barker A. J., Ogilvie G. I., 2009, *MNRAS*, 395, 2268

- Barnes J. W., 2009, *ApJ*, 705, 683
 Berdnikov L. N., Belinskii A. A., Shatskii N. I., Burlak M. A., Ikonnikova N. P., Mishin E. O., Cheryasov D. V., Zhuiko S. V., 2020, *Astron. Rep.*, 64, 310
 Boisse I. et al., 2010, *A&A*, 523, A88
 Bonfanti A., Gillon M., 2020, *A&A*, 635, A6
 Bonfanti A., Ortolani S., Nascimbeni V., 2016, *A&A*, 585, A5
 Bonfanti A., Ortolani S., Ptoth G., Nascimbeni V., 2015, *A&A*, 575, A18
 Bonnarel F. et al., 2000, *A&AS*, 143, 33
 Borucki W. J. et al., 2010, *Science*, 327, 977
 Boss A. P. et al., 2007, in Engvold O., ed., *IAU Transactions*, Vol. 26A, Reports on Astronomy 2002-2005. Cambridge Univ. Press, Cambridge, p. 183
 Bossini D. et al., 2019, *A&A*, 623, A108
 Bouchy F. et al., 2009, *A&A*, 505, 853
 Burdanov A. et al., 2018, *PASP*, 130, 074401
 Burdanov A. Y. et al., 2016, *MNRAS*, 461, 3854
 Burrows A. et al., 1997, *ApJ*, 491, 856
 Cantat-Gaudin T. et al., 2018, *A&A*, 618, A93
 Cantat-Gaudin T., Anders F., 2020, *A&A*, 633, A99
 Carmichael T. W. et al., 2020, *AJ*, 160, 53
 Carmichael T. W., Latham D. W., Vanderburg A. M., 2019, *AJ*, 158, 38
 Castellì F., Kurucz R. L., 2003, in Piskunov N., Weiss W. W., Gray D. F., eds, *Proc. IAU Symp. 210, Modelling of Stellar Atmospheres*. Astron. Soc. Pac., San Francisco, p. A20
 Chabrier G., Baraffe I., Allard F., Hauschildt P., 2000, *ApJ*, 542, 464
 Chabrier G., Johansen A., Janson M., Rafikov R., 2014, in Beuther H., Klessen R. S., Dullemond C. P., Henning T., eds, *Protostars and Planets VI*. Univ. Arizona Press, Tucson, AZ, p. 619
 Chen B. Q. et al., 2019, *MNRAS*, 483, 4277
 Claret A., Hauschildt P. H., Witte S., 2012, *A&A*, 546, A14
 Damiani C., Díaz R. F., 2016, *A&A*, 589, A55
 Damiani C., Lanza A. F., 2015, *A&A*, 574, A39
 Eastman J., Siverd R., Gaudi B. S., 2010, *PASP*, 122, 935
 Espinosa Lara F., Rieutord M., 2011, *A&A*, 533, A43
 Falcón-Barroso J., Sánchez-Blázquez P., Vazdekis A., Ricciardelli E., Cardiel N., Cenarro A. J., Gorgas J., Peletier R. F., 2011, *A&A*, 532, A95
 Frolov V. N., Ananjevskaja J. K., Jilinski E. G., Gorshakov D. L., Bronnikova N. M., 2006, *A&A*, 451, 901
 Gaia Collaboration et al., 2018, *A&A*, 616, A1
 Gelman A., Rubin D. B., 1992, *Stat. Sci.*, 7, 457
 Gillon M. et al., 2012, *A&A*, 542, A4
 Gillon M., 2011, in Bouchy F., Díaz R., Moutou C., eds, *EPJ Web of Conferences*, Volume 11. St. Michel l'Observatoire, France, p. 06002
 Gorbvskoy E. S. et al., 2013, *Astron. Rep.*, 57, 233
 Grether D., Lineweaver C. H., 2006, *ApJ*, 640, 1051
 Halbwachs J. L., Arenou F., Mayor M., Udry S., Queloz D., 2000, *A&A*, 355, 581
 Hayashi C., Nakano T., 1963, *Prog. Theor. Phys.*, 30, 460
 Hébrard G. et al., 2011, *A&A*, 533, A130
 Henden A. A., Templeton M., Terrell D., Smith T. C., Levine S., Welch D., 2015, *American Astronomical Society, AAS Meeting #225*, p. id.336.16
 Hippke M., Heller R., 2019, *A&A*, 623, A39
 Hodžić et al., 2018, *MNRAS*, 481, 5091
 Howell S. B. et al., 2014, *PASP*, 126, 398
 Huang C. X. et al., 2018, *ApJ*, 868, L39
 Jackman J. A. G. et al., 2019, *MNRAS*, 489, 5146
 Jehin E. et al., 2011, *The Messenger*, 145, 2
 Jenkins J. M. et al., 2016, in *Proceedings of the SPIE*, Volume 9913. SPIE, p. 99133E
 Kharchenko N. V., 2007, *Astronomische Nachrichten*, 328, 889
 Kharchenko N. V., Piskunov A. E., Schilbach E., Röser S., Scholz R. D., 2012b, *A&A*, 543, A156
 Kharchenko N. V., Piskunov A. E., Schilbach E., Röser S., Scholz R. D., 2013, *A&A*, 558, A53
 Kiefer F. et al., 2019, *A&A*, 631, A125
 Konacki M., Torres G., Jha S., Sasselov D. D., 2003, *Nature*, 421, 507
 Kovács G., Zucker S., Mazeh T., 2002, *A&A*, 391, 369
 Krushinsky V. et al., 2020, *MNRAS*, 493, 5208

- Kumar S. S., 1963, *ApJ*, 137, 1121
- Ma B., Ge J., 2014, *MNRAS*, 439, 2781
- Maksimov A. F., Balega Y. Y., Dyachenko V. V., Malogolovets E. V., Rastegaev D. A., Semernikov E. A., 2009, *Astrophys. Bull.*, 64, 296
- Mandel K., Agol E., 2002, *ApJ*, 580, L171
- Marcy G. W., Butler R. P., 2000, *PASP*, 112, 137
- Marigo P. et al., 2017, *ApJ*, 835, 77
- Murray C. D., Correia A. C. M., 2010, in Seager S., ed. *Exoplanets*. University of Arizona Press, Tucson, AZ, p. 15
- Pätzold M., Rauer H., 2002, *ApJ*, 568, L117
- Pepe F., Mayor M., Galland F., Naef D., Queloz D., Santos N. C., Udry S., Burnet M., 2002, *A&A*, 388, 632
- Perruchot S. et al., 2008, in McLean I. S., Casali M. M., eds. *Ground-based and Airborne Instrumentation for Astronomy II. Proceedings of the SPIE, Volume 7014*, p. 12
- Phillips M. W. et al., 2020, *A&A*, 637, A38
- Pollacco D. L. et al., 2006, *PASP*, 118, 1407
- Pont F. et al., 2008, *A&A*, 487, 749
- Pozuelos F. J. et al., 2020, *A&A*, 641, A23
- Price-Whelan A. M. et al., 2018, *AJ*, 156, 123
- Rauer H. et al., 2014, *Exp. Astron.*, 38, 249
- Ricker G. R. et al., 2014, *Proceedings of the SPIE*, 9143, id. 914320
- Sahlmann J. et al., 2011, *A&A*, 525, A95
- Schneider J., Dedieu C., Le Sidaner P., Savalle R., Zolotukhin I., 2011, *A&A*, 532, A79
- Schwarz G., 1978, *Ann. Stat.*, 6, 461
- Sivard R. J. et al., 2012, *ApJ*, 761, 123
- Skrutskie M. F. et al., 2006, *The Astronomical Journal*, 131, 1163
- Sokov E. N. et al., 2018, *MNRAS*, 480, 291
- Spiegel D. S., Burrows A., Milsom J. A., 2011, *ApJ*, 727, 57
- Subjak J. et al., 2020, *AJ*, 159, 151
- Tody D., 1986, in Crawford D. L., ed., *Proc. SPIE Conf. Ser. Vol. 627, Instrumentation in Astronomy VI*. SPIE, Bellingham, WA, p. 733
- Triaid A. H. M. J., 2018, *Handbook of Exoplanets*. Springer International Publishing AG, part of Springer Nature, p. 2
- Udalski A., 2003, *AcA*, 53, 291
- Udalski A., Szymański M. K., Szymański G., 2015, *Acta Astron.*, 65, 1
- Vanderburg A. et al., 2019, *ApJ*, 881, L19
- Wilson P. A. et al., 2016, *A&A*, 588, A144
- Wright E. L. et al., 2010, *The Astronomical Journal*, 140, 1868
- Wu Y., Singh H. P., Prugniet P., Gupta R., Koleva M., 2011, *A&A*, 525, A71
- Zhou G. et al., 2019, *AJ*, 157, 31
- ¹Acton Sky Portal (Private Observatory), Acton, MA 01720, USA
- ²Department of Earth, Atmospheric and Planetary Sciences, Massachusetts Institute of Technology, 77 Massachusetts Avenue, Cambridge, MA 02139, USA
- ³Instituto de Astrofísica de Canarias, Vía Láctea s/n, E-38205 La Laguna, Tenerife, Spain
- ⁴Laboratory of Astrochemical Research, Ural Federal University, Mira Street 19, 620002 Yekaterinburg, Russia
- ⁵Space Research Institute, Austrian Academy of Sciences, Schmiedlstrasse 6, A-8042 Graz, Austria
- ⁶Space Sciences, Technologies and Astrophysics Research (STAR) Institute, Université de Liège, Allée du 6 Août 17, B-4000 Liège, Belgium
- ⁷Institut d'Astrophysique de Paris, UMR7095 CNRS, Université Pierre & Marie Curie, 98bis boulevard Arago, F-75014 Paris, France
- ⁸Observatoire de Haute-Provence, CNRS, Université d'Aix-Marseille, F-04870 Saint-Michel-l'Observatoire, France
- ⁹Université Grenoble Alpes, CNRS, IPAG, F-38000 Grenoble, France
- ¹⁰Instituto de Astrofísica e Ciências do Espaço, Universidade do Porto, CAUP, Rua das Estrelas, P-4150-762 Porto, Portugal
- ¹¹INAF – Osservatorio Astrofisico di Arcetri, Largo E. Fermi 5, I-50125 Firenze, Italy
- ¹²Department of Physics, Lehigh University, 16 Memorial Drive East, Bethlehem, PA 18015, USA
- ¹³Department of Physics and Astronomy, Vanderbilt University, 6301 Stevenson Center Ln., Nashville, TN 37235, USA
- ¹⁴Department of Astronomy, The University of Texas at Austin, Austin, TX 78712, USA
- ¹⁵Sternberg Astronomical Institute, M.V. Lomonosov Moscow State University, 13 Universitetskij pr., 119234 Moscow, Russia
- ¹⁶Faculty of Physics, M.V. Lomonosov Moscow State University, Leninskiy Gory 1, 119991 Moscow, Russia
- ¹⁷Astrobiology Research Unit, Université de Liège, Allée du 6 Août 19C, B-4000 Liège, Belgium
- ¹⁸Oukaimeden Observatory, High Energy Physics and Astrophysics Laboratory, Cadi Ayyad University, 40000 Marrakech, Morocco
- ¹⁹National Youth Space Center, Goheung, Jeollanam-do 59567, South Korea
- ²⁰Federal State Budget Scientific Institution Crimean Astrophysical Observatory of RAS, Nauchny, 298409 Crimea, Russia
- ²¹Special Astrophysical Observatory, Russian Academy of Sciences, Nizhnij Arkhyz 369167, Russia,
- ²²Faculty of Mathematics & Mechanics, Saint Petersburg State University, Universitetskij pr. 28, Petrodvorets, St. Petersburg 198504, Russia
- ²³Ural Federal University, Mira Street, 19, 620002 Yekaterinburg, Russia
- ²⁴Centre for Exoplanets and Habitability, University of Warwick, Gibbet Hill Road, Coventry CV4 7AL, UK
- ²⁵Department of Physics, University of Warwick, Gibbet Hill Road, Coventry CV4 7AL, UK
- ²⁶Department of Physics, and Kavli Institute for Astrophysics and Space Research, Massachusetts Institute of Technology, Cambridge, MA 02139, USA
- ²⁷Center for Astrophysics | Harvard & Smithsonian, 60 Garden St., Cambridge, MA 02138, USA
- ²⁸Department of Aeronautical and Astronautical Engineering, Massachusetts Institute of Technology, Cambridge, MA 02139, USA
- ²⁹NASA Ames Research Center, Moffett Field, CA 94035, USA
- ³⁰Central Astronomical Observatory at Pulkovo of Russian Academy of Sciences, Pulkovskoje shosse d. 65, St. Petersburg 196140, Russia
- ³¹Astronomical Observatory - DSFTA, University of Siena, Via Roma 56, I-53100 Siena, Italy
- ³²Wild Boar Remote Observatory, I-50026 San Casciano in Val di Pesa (FI), Italy
- ³³Faculty of Science, Department of Astronomy and Space Science, Ankara University, TR-06100 Tandoğan, Ankara, Turkey
- ³⁴Irkutsk State University, K. Marx str. 1, Irkutsk 664003, Russia
- ³⁵Institute of Theoretical Physics and Astronomy, Vilnius University, Saulėtekio al. 3, Vilnius, LT-10257, Lithuania
- ³⁶Taurus Hill Observatory, Härkämäentie 88, FI-79480 Varkaus, Finland
- ³⁷Physics and Engineering Physics Department, University of Saskatchewan, Saskatoon, SK S7N 5E2, Canada
- ³⁸Baronnies Provençales Observatory, Hautes Alpes - Parc Naturel Régional des Baronnies Provençales, E-05150 Moydans, France
- ³⁹GJP private observatory, Elgin, OR 97827, USA
- ⁴⁰Rasteau Observatory, F-84110 Rasteau, France
- ⁴¹Anunaki Observatory, 28410 Manzanares El Real, Spain
- ⁴²Grand-Pra private observatory, 1984 Les Hauderes, Switzerland
- ⁴³Observatory Ca l'Ou, E-08282 Sant Martí Sesgueioles, Spain
- ⁴⁴Observatori Montcabrer, c/Jaume Balmes n 24 Cabrls E-08348, Spain
- ⁴⁵Department of Physics and Astronomy, Brigham Young University, Provo, UT 84602 USA
- ⁴⁶Center for Exoplanets and Habitable Worlds, The Pennsylvania State University, 525 Davey Lab, University Park, PA 16802, USA
- ⁴⁷Department of Astronomy & Astrophysics, The Pennsylvania State University, 525 Davey Lab, University Park, PA 16802, USA
- ⁴⁸Department of Physics & Astronomy, Swarthmore College, 500 College Ave., Swarthmore, PA 19081, USA
- ⁴⁹NASA Goddard Space Flight Center, 8800 Greenbelt Rd, Greenbelt, MD 20771, USA
- ⁵⁰Space Telescope Science Institute, 3700 San Martin Drive, Baltimore, MD 21218, USA

This paper has been typeset from a $\text{\TeX}/\text{\LaTeX}$ file prepared by the author.