

3-15-2004

Comparison Of Structure And Properties Of Femtosecond And Nanosecond Laser-Structured Silicon

Catherine Hirshfeld Crouch
Swarthmore College, ccrouch1@swarthmore.edu

J. E. Carey

J. M. Warrender

M. J. Aziz

E. Mazur

See next page for additional authors

Let us know how access to these works benefits you

Follow this and additional works at: <http://works.swarthmore.edu/fac-physics>



Part of the [Physics Commons](#)

Recommended Citation

Catherine Hirshfeld Crouch, J. E. Carey, J. M. Warrender, M. J. Aziz, E. Mazur, and F. Y. Génin. (2004). "Comparison Of Structure And Properties Of Femtosecond And Nanosecond Laser-Structured Silicon". *Applied Physics Letters*. Volume 84, Issue 11. 1850-1852. <http://works.swarthmore.edu/fac-physics/204>

This Article is brought to you for free and open access by the Physics & Astronomy at Works. It has been accepted for inclusion in Physics & Astronomy Faculty Works by an authorized administrator of Works. For more information, please contact myworks@swarthmore.edu.

Authors

Catherine Hirshfeld Crouch, J. E. Carey, J. M. Warrender, M. J. Aziz, E. Mazur, and F. Y. Génin

Comparison of structure and properties of femtosecond and nanosecond laser-structured silicon

C. H. Crouch, J. E. Carey, J. M. Warrender, M. J. Aziz, E. Mazur, and F. Y. Génin

Citation: [Applied Physics Letters](#) **84**, 1850 (2004); doi: 10.1063/1.1667004

View online: <http://dx.doi.org/10.1063/1.1667004>

View Table of Contents: <http://scitation.aip.org/content/aip/journal/apl/84/11?ver=pdfcov>

Published by the [AIP Publishing](#)

Articles you may be interested in

[Laser induced lifetime degradation in p-type crystalline silicon](#)

J. Appl. Phys. **111**, 114515 (2012); 10.1063/1.4725191

[Studying femtosecond-laser hyperdoping by controlling surface morphology](#)

J. Appl. Phys. **111**, 093511 (2012); 10.1063/1.4709752

[Pulse number dependence of laser-induced periodic surface structures for femtosecond laser irradiation of silicon](#)

J. Appl. Phys. **108**, 034903 (2010); 10.1063/1.3456501

[Effects of prior hydrogenation on the structure and properties of thermally nanocrystallized silicon layers](#)

J. Appl. Phys. **83**, 5797 (1998); 10.1063/1.367435

[Optical properties of degenerately doped silicon films for applications in thermophotovoltaic systems](#)

J. Appl. Phys. **81**, 432 (1997); 10.1063/1.364076

The advertisement features a photograph of the Model PS-100 cryogenic probe station, which is a complex piece of scientific equipment with various mechanical components and a probe. The background is a gradient of blue. The text is arranged around the image: the model name and description on the left, the company logo and name on the right, and a slogan at the bottom right.

Model PS-100
Tabletop Cryogenic
Probe Station

The logo for Lake Shore CRYOTRONICS consists of a stylized blue and white geometric shape to the left of the company name. 'Lake Shore' is in a large, white, serif font, and 'CRYOTRONICS' is in a smaller, white, sans-serif font below it.

*An affordable solution for
a wide range of research*

Comparison of structure and properties of femtosecond and nanosecond laser-structured silicon

C. H. Crouch,^{a)} J. E. Carey, J. M. Warrender, M. J. Aziz, and E. Mazur^{b)}

Division of Engineering and Applied Sciences, Harvard University, Cambridge, Massachusetts 02138

F. Y. Génin

Lawrence Livermore National Laboratory, Livermore, California 94550

(Received 8 August 2003; accepted 7 January 2004)

We compare the optical properties, chemical composition, and crystallinity of silicon microstructures formed in the presence of SF₆ by femtosecond laser irradiation and by nanosecond laser irradiation. In spite of very different morphology and crystallinity, the optical properties and chemical composition of the two types of microstructures are very similar. The structures formed with femtosecond (fs) pulses are covered with a disordered nanocrystalline surface layer less than 1 μm thick, while those formed with nanosecond (ns) pulses have very little disorder. Both ns-laser-formed and fs-laser-formed structures absorb near-infrared (1.1–2.5 μm) radiation strongly and have roughly 0.5% sulfur impurities. © 2004 American Institute of Physics.

[DOI: 10.1063/1.1667004]

Many types of micrometer-scale surface structures develop spontaneously on silicon surfaces after repeated pulsed laser irradiation.¹ In particular, sharp conical microstructures form on silicon surfaces in the presence of SF₆ with either femtosecond (fs)² or nanosecond (ns)³ laser irradiation. Mazur and co-workers previously found that fs-laser-formed structures exhibit below-band gap light absorption and photocurrent generation;^{4,5} these remarkable optoelectronic properties are attributed to sulfur impurities in a microcrystalline surface layer.^{4,6} Although the fs-laser-formed and ns-laser-formed structures resemble one another superficially, the differences in formation conditions and morphology suggest that the formation mechanisms of the two types of structures differ significantly. We set out to determine whether the optoelectronic properties, chemical composition, and crystallinity of the ns-formed and fs-formed structures also differ.

We made samples by irradiating a silicon wafer with a train of laser pulses in a vacuum chamber backfilled with SF₆.⁴ (Mazur and co-workers found previously that the doping, resistivity, and crystal plane of the substrate do not affect the optical properties.⁶) The pressure of SF₆ was chosen to match the conditions used in initial reports of these structures (0.67 bar of SF₆ with fs pulses² and 1 bar of SF₆ with ns pulses³). A regeneratively amplified Ti:sapphire laser delivered a train of 800 nm, 100 fs pulses with a Gaussian spatial profile; the average fluence of the laser spot was 8 kJ/m². A KrF⁺ excimer laser delivered a train of 248 nm, 30 ns laser pulses with a flat-top spatial profile and a fluence of 30 kJ/m². Irradiation creates an array of structures on the sample surface only in the region illuminated by the laser.

We structure areas up to 10 mm×10 mm by scanning the laser beam across the sample. The average number of laser pulses on any part of the surface is determined by the scan speed, the size of the laser spot on the sample surface,

and the laser repetition rate. To produce fully developed spikes, an average of 500 laser pulses was delivered to each area with fs pulses,⁴ and an average of 1500 laser pulses with ns pulses.³

Images of the structures are shown in Fig. 1. The structures formed with the fs laser are one-fifth the size of those formed with the ns laser. The fs-formed structures are roughly 8 μm tall and separated by 4 μm; the ns-formed structures are roughly 40 μm tall and separated by 20 μm. The tips of the fs-formed structures are at the level of the original surface of the wafer [Fig. 1(e)], while the ns-formed structures protrude above the original surface [Fig. 1(f)].

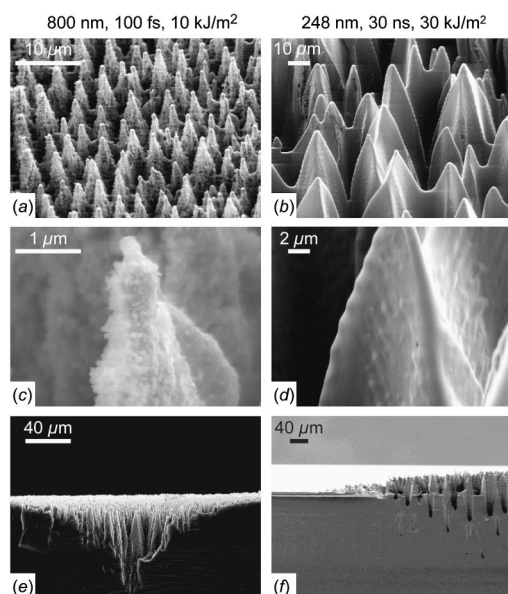


FIG. 1. Scanning electron micrographs of laser-microstructured Si surface formed in SF₆ [(a), (c), (e)] with fs laser pulses, and [(b), (d), (f)] with ns laser pulses. In (a)–(d) the sample is viewed at 45° to the normal; in (e) and (f) the sample is snapped in half and viewed edge-on.

^{a)}Electronic mail: mazur@physics.harvard.edu

^{b)}Present address: Dept. of Physics & Astronomy, Swarthmore College, Swarthmore, PA 19081.

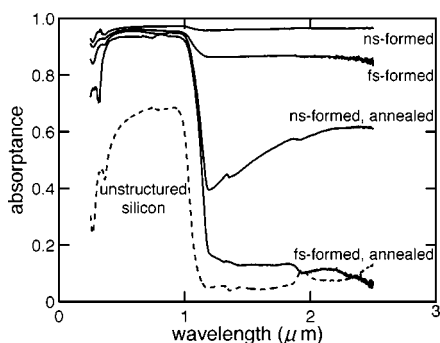


FIG. 2. Dependence of absorbance (A) on wavelength of fs-laser-formed and ns-laser-formed microstructures, before and after thermal annealing at 875 K for 45 min in flowing Ar. The absorbance of the unstructured Si substrate is also shown.

nally, the fs-formed structures are covered with nanoparticles 10–50 nm in diameter that appear to have been deposited on the structures [Fig. 1(c)], while the surface of the ns-formed structures is much smoother, with 500 nm size protrusions that appear to grow out of the surface [Fig. 1(d)].

We measured total hemispherical (specular and diffuse) reflectance (R) and transmittance (T) to determine the absorbance ($A = 1 - R - T$) of the structured surfaces. Measurements were performed with a Hitachi U-4001 UV-VIS spectrophotometer equipped with an integrating sphere detector. Figure 2 shows the wavelength dependence of the absorbance of both structured surfaces and of the unstructured substrate silicon. The absorbance of the ns- and fs-formed structures is very similar: near-unity, featureless absorbance from 0.4 to 1 μm , a small decrease in absorbance around 1.1 μm (the band edge of ordinary silicon), and strong featureless absorbance from 1.1 to 2.5 μm . The absorbance at wavelengths longer than 1.1 μm is particularly remarkable, as unstructured silicon is nearly transparent at these below-band gap wavelengths. The absorbance of the ns-structured material (98% in the visible, 95% in the infrared) is somewhat stronger than that of the fs-structured material (95% in the visible, 85% in the infrared).

Annealing the structured surfaces at 875 K for 45 min in flowing Ar leaves the visible absorbance essentially unchanged, but dramatically decreases the below-band gap absorbance (Fig. 2). The below-band gap absorbance of the ns-structured material changes less with annealing than that of the fs-structured material, and further annealing of the ns-structured material for up to 12 h causes little additional change. The morphology of the structures observed with scanning electron microscopy is unchanged by annealing at 875 K.⁶ These observations suggest that the visible absorbance is due to amplification of the intrinsic visible absorbance of silicon by multiple reflections from the rough surface, but the below-band gap absorbance must come from electronic structure changes that are affected by annealing. (In the 40- μm -deep ns-formed structures, the below-band gap absorbance should also be significantly amplified by multiple reflections; geometric effects may be less important to the below-band gap absorption in the fs-formed structures because these infrared wavelengths are not much less than the 8 μm structure depth.)

Both the fs-structured and the ns-structured material exhibit photocurrent generation at wavelengths from 0.4 to

1.65 μm ; annealed samples have the greatest photoresponsivity. Both the fs-structured and the ns-structured materials, when annealed, have a photoresponsivity on the order of 10 mA/W in the near infrared, with the responsivity at 1.31 μm roughly twice that at 1.55 μm .⁵ The infrared photoresponsivity is orders of magnitude lower in unannealed samples, although the below-band gap absorbance is several times greater; we surmise that annealing dramatically increases the mobility of the photocarriers, and the increased mobility more than compensates for the loss in absorbance.

Mazur and co-workers found previously that fs structuring must take place in the presence of sulfur to produce featureless, near-unity below-band gap absorption; structures formed in air or in vacuum do not absorb strongly at wavelengths longer than 1.1 μm .^{7,8} Likewise, ns-formed structures formed in air do not absorb at below-band gap wavelengths. Sulfur impurities in the structures therefore appear to be critical to the below-band gap absorption.

To determine the concentration of sulfur impurities, we performed Rutherford backscattering spectrometry (RBS) and ion channeling on the structured samples, and compared the measured RBS spectra to simulated spectra from planar material. We measured the backscattering spectrum from 2.0 MeV He^+ with an annular solid state detector. As the RBS signal from deeper sulfur is masked by the silicon signal, the spectrum measures only the average sulfur concentration in the uppermost 100 nm of the surface. To simplify the RBS spectra, the surface oxide layer, which also includes fluorine impurities, is removed from the samples by etching for 4 min in 5% HF; etching has no effect on the optical properties or surface morphology.

The RBS spectra of the fs-structured samples indicate that the sulfur concentration in the uppermost 100 nm is 0.7 ± 0.1 at. % before annealing and 0.5 ± 0.1 at. % after annealing. The sulfur signal obtained with ion channeling is slightly lower than that obtained with randomly aligned RBS, suggesting that some of the sulfur impurities are substitutional. The fs-structured samples channel poorly ($\chi_{\text{min}}^{(\text{Si})} \sim 50\%$), however, and the reduction in sulfur signal with channeling is comparable in magnitude to the possible sources of error. Hence we can only determine that between 20% and 70% of the sulfur in the unannealed fs-structured sample is substitutional, and we cannot determine how much sulfur is substitutional in the annealed fs-structured sample. In the ns-structured samples, the sulfur concentration in the observable near-surface region is 0.5 ± 0.1 at. % before annealing, and 0.4 ± 0.1 at. % after annealing. The ns-structured samples show much stronger silicon channeling ($\chi_{\text{min}}^{(\text{Si})} = 5.6\%$ before and 6.6% after annealing), and nearly half of the sulfur is substitutional ($43\% \pm 7\%$ before and $48\% \pm 8\%$ after annealing). The sulfur concentration is therefore very similar in the two types of structures, but much more of the affected material in the ns-structured samples is single crystal than in the fs-structured samples, and a great deal of the sulfur is definitely substitutional in the ns-structured samples. The sulfur may or may not be incorporated differently into the silicon in the two types of structures.

Given that annealing changes the optical properties dramatically, but only reduces the amount of observable sulfur by about 20%, it is likely that the local environment of the

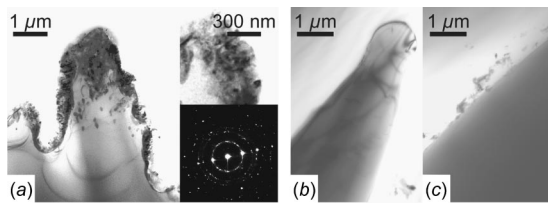


FIG. 3. Bright-field transmission electron micrographs of (a) cross section of fs-laser-formed microstructure [insets: (upper panel) higher magnification view of disordered material, (lower panel) selected area electron diffraction pattern obtained from the tip of the sample]; (b) cross section of tip of ns-laser-formed microstructure; and (c) cross section of side of ns-laser-formed microstructure.

sulfur impurities is important to the optical properties. To learn more about the material structure, we examined cross sections of the structures with bright-field transmission electron microscopy (TEM). Figure 3 shows micrographs of a fs-structured sample [Fig. 3(a)] and a ns-structured sample [Figs. 3(b) and 3(c)]. The fs-formed structures consist of a core of undisturbed silicon covered with a highly disordered layer of silicon less than $1\ \mu\text{m}$ thick including nanocrystallites, nanopores, and sulfur impurities. Selected area diffraction [inset to Fig. 3(a)] indicates that the core is crystalline and the surface layer is polycrystalline or microcrystalline; energy dispersive x-ray spectroscopy detects roughly 1% sulfur impurities in the disordered layer but none in the core.⁶ The TEM images and diffraction patterns obtained from annealed samples are similar.⁶ The ns-formed structures likewise have a crystalline core, but the disordered layer is even thinner (200 nm or less) and covers only parts of the structures; the tips of the structures are free of visible disorder. Although the bases of the ns-formed structures [visible in Fig. 1(f)] cannot be observed in TEM, they are visible to ion channeling, which averages over the projected surface. Hence the observed good channeling indicates that even at the bases, the surface of the ns-formed structures cannot be as disordered as that of the fs-formed structures.

How do such different structures have such similar optoelectronic properties? In both the ns- and fs-formed structures, sulfur is required for strong below-band gap absorption, and thermal annealing reduces the absorbance strongly while reducing the observable sulfur content by only 20% and having no obvious effect on the crystallinity. The disordered layer covering the fs-formed structures is not essential for below-band gap absorption, as both TEM and RBS indicate that the ns-formed structures are nearly single crystal. Most likely, laser structuring incorporates sulfur into silicon in an optically active configuration; then, during thermal annealing, some of the sulfur is deactivated by complexing with other defects or by forming precipitates. Sulfur is known to stabilize ion implantation-induced damage against thermal annealing,⁹ so it is plausible that sulfur can form relatively stable defect complexes. Annealing at 875 K for 45 min would indeed permit both defect annihilation in the silicon lattice¹⁰ and diffusion of sulfur over hundreds of nanometers;¹¹ the observed reduction in sulfur concentration most likely comes from sulfur diffusing to depths greater than can be observed with RBS.

Such an optically active configuration of sulfur may be able to exist in either the single crystal ns-formed structures

or the highly disordered fs-formed structures; the deactivation process must not require a significant increase in the crystallinity of the fs-formed structures. Alternatively, different optically active configurations of sulfur could be present in the fs-formed and ns-formed structures, although none of our results directly suggest this interpretation.

In the ns-formed structures, the sulfur incorporation process is probably similar to gas immersion laser doping,¹² in which a semiconductor is doped by melting the surface with ns laser pulses in the presence of a gas containing the desired dopants. The dopants are incorporated into the melt and rapid solidification that follows laser melting can produce highly supersaturated solid solutions.¹³ Sulfur may be incorporated into the fs-formed structures by a similar process; the fs laser fluences used are not far above the ablation threshold, and so a molten layer forms at the surface after the laser-induced plasma recombines and the electrons and lattice equilibrate.¹⁴

In summary, laser microstructuring of silicon surfaces in the presence of SF_6 with either ns or fs laser pulses produces strong below-band gap absorption and photocarrier generation. Both types of structures exhibit these remarkable optoelectronic properties in spite of significant differences in crystallinity and morphology. Our results suggest that laser structuring and sulfur doping of silicon is a robust way to extend the photoresponsivity of silicon into the near-infrared.

We thank J. Chervinsky, J. Harper, E. Hoke, J. Sage, and M. Sheehy for experimental assistance, and Professor C. M. Friend, Professor E. Kaxiras, Professor J. Leonard, Professor W. Paul, and Professor F. Spaepen for helpful discussions. Work at Harvard was supported by the Harvard MRSEC (NSF/DMR-98-09363), the Dept. of Energy (DOE DE FC36 01GO11053), and the Army Research Office (DAAD19-99-1-0009). Work at LLNL was performed under the auspices of the U.S. Dept. of Energy by the Univ. of CA, Lawrence Livermore National Laboratory under Contract No. W-7405-Eng-48.

¹S. R. Foltyn, in *Pulsed Laser Deposition of Thin Films*, edited by D. B. Christy and G. K. Hubler (Wiley-Interscience, New York, 1994), Chap. 4, and references therein.

²T. H. Her, R. J. Finlay, C. Wu, S. Deliwala, and E. Mazur, *Appl. Phys. Lett.* **73**, 1673 (1998).

³A. J. Pedraza, J. D. Fowlkes, and D. H. Lowndes, *Appl. Phys. Lett.* **74**, 2322 (1999).

⁴C. Wu, C. H. Crouch, L. Zhao, J. E. Carey, R. Younkin, J. A. Levinson, E. Mazur, R. M. Farrell, P. Gothoskar, and A. Karger, *Appl. Phys. Lett.* **78**, 1850 (2001).

⁵J. E. Carey, C. H. Crouch, M. Shen, M. A. Sheehy, C. M. Friend, and E. Mazur (unpublished).

⁶C. H. Crouch, J. E. Carey, M. Y. Shen, E. Mazur, and F. Génin, *Appl. Phys. A* (to be published).

⁷R. Younkin, J. E. Carey, E. Mazur, J. A. Levinson, and C. M. Friend, *J. Appl. Phys.* **93**, 2626 (2003).

⁸M. Sheehy, L. Winston, J. E. Carey, E. Mazur, and C. M. Friend (unpublished).

⁹R. Wilson, *J. Appl. Phys.* **55**, 3490 (1984).

¹⁰A. Agarwal, H. J. Gossmann, D. J. Eaglesham, L. Pelaz, D. C. Jacobson, J. M. Poate, and T. E. Haynes, *Mater. Sci. Eng., A* **253**, 269 (1998).

¹¹The diffusion coefficient of S in c-Si at 875 K was estimated to be $1.6 \times 10^{-13}\ \text{cm}^2/\text{s}$ by extrapolation from data in S. M. Sze, *Physics of Semiconductor Devices*, 2nd ed. (Wiley, New York, 1981), p. 68.

¹²P. G. Carey and T. W. Sigmon, *Appl. Surf. Sci.* **43**, 325 (1989).

¹³R. Reitano, P. M. Smith, and M. J. Aziz, *J. Appl. Phys.* **76**, 1518 (1994).

¹⁴V. I. Emel'yanov and D. V. Babak, *Appl. Phys. A* **74**, 797 (2002).